

# CANNE CARBONE DE MESURE de 100 mm à 10 Mètres

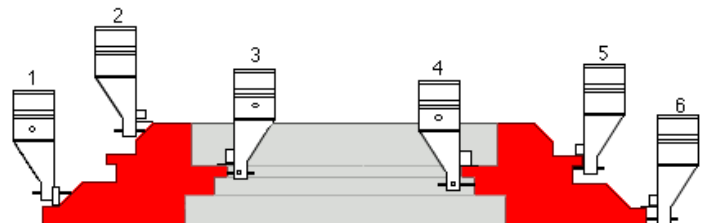
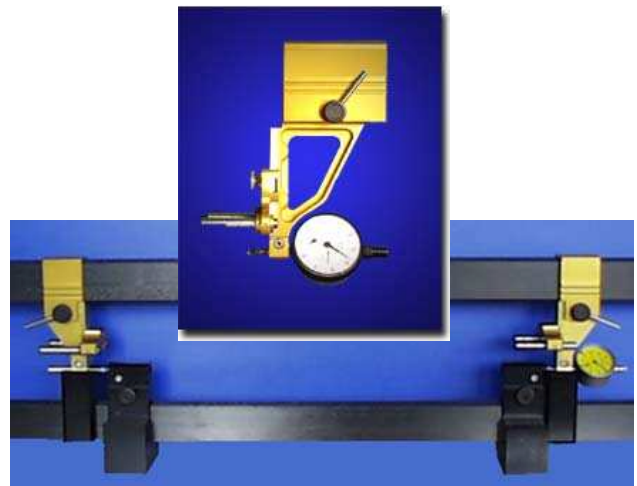
[www.menegon-metrologie.com](http://www.menegon-metrologie.com)

## UNE SOLUTION INNOVANTE

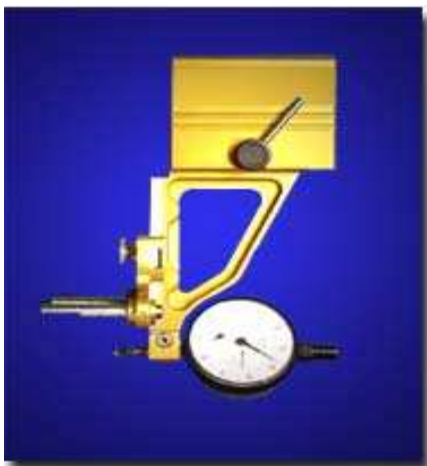
Nos Solutions de mesure Carbone s'adressent à tout utilisateur confronté à un problème de mesure précise sur des pièces allant typiquement de 200mm à 10.000 mm. Grâce à l'utilisation du Carbone apportant des propriétés de Précision, Légèreté, Robustesse et stabilité en Température, nos solutions s'utilisent aussi bien dans un local de Contrôle que dans un Atelier de Production ou sur Site (Plateforme Pétrolière, Maintenance Aéroportuaire...).

## DES POSSIBILITES INFINIES

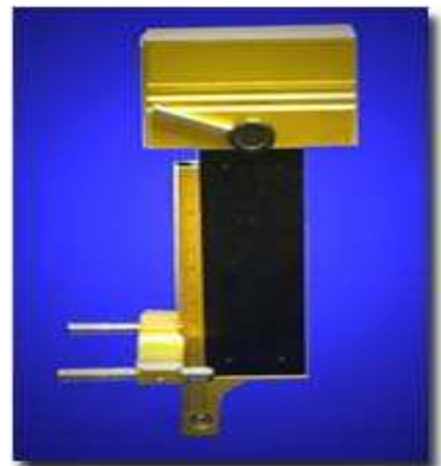
De nombreuses configurations géométriques existent en standard (mesure de Diamètres, Alésages, Gorges Inter/Exter, Cone, Chemin de Billes ...). Sur simple réception de vos plans notre Bureau d'études étudiera la solution adaptée à vos besoins, soit à partir de nos nombreux accessoires, soit par la création d'une solution personnalisée



- |                            |                                     |
|----------------------------|-------------------------------------|
| 1 Cône avec déport négatif | 4 Gorge Inter. (ou Chemin de Bille) |
| 2 Cône avec déport positif | 5 Gorge Exter. (ou Chemin de Bille) |
| 3 Alésage                  | 6 Diamètre                          |



Cette gamme est particulièrement adaptée à une utilisation en prototypage et en petites séries. Ses multiples réglages, ainsi que sa rapidité de mise en oeuvre, lui permettent une grande flexibilité pour s'adapter à une production changeante et variable. Ses nombreux accessoires (disponibles en options) lui confèrent une latitude de prise de mesures inégalée.



Cette gamme permet la prise de mesures profondes grâce à l'allonge de ses ferrures (hauteur mini 210mm).

# CANNE CARBONNE DE MESURE de 100 mm à 10 Mètres

[www.menegon-metrologie.com](http://www.menegon-metrologie.com)

## ETALONS D'ATELIER

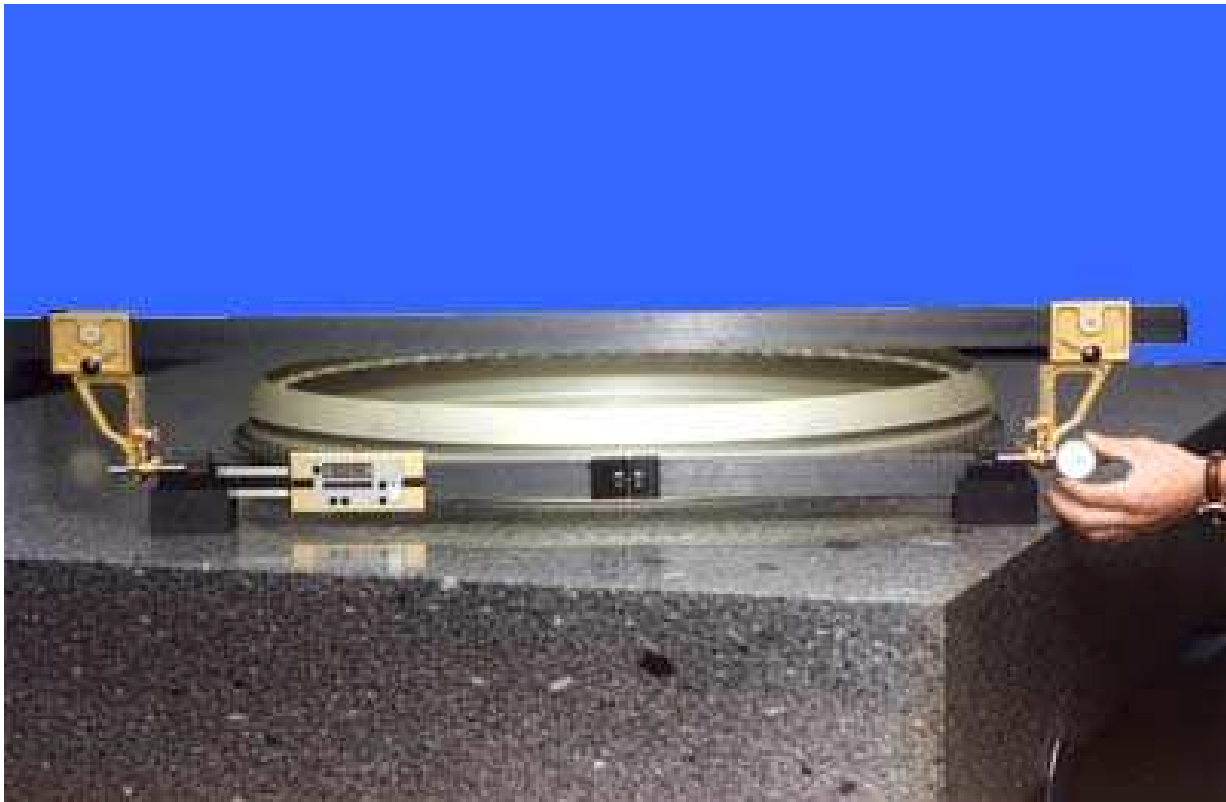


Les étalons carbone d'Atelier permettent d'apporter une solution simple, fiable et économique dans l'équipement de vos postes de fabrication.

Simple d'utilisation, ils sont réglables soit directement sur un Banc de Mesure Trimos, soit à l'aide de votre Mesureur préalablement étalonné en métrologie. La précision et la facilité d'emploi sont assurées grâce à un double système de réglage (approche rapide), et (réglage fin).

Chaque étalon peut-être réglé à volonté et configuré en mode Diamètre ou Alésage. Vous ne reformez plus vos étalons suite à un changement de cote.

Les étalons Carbone sont disponibles pour des longueurs allant de 100mm à 8.000mm en standard.



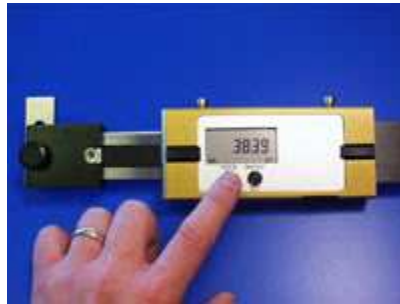
# CANNE CARBONNE DE MESURE de 100 mm à 10 Mètres

[www.menegon-metrologie.com](http://www.menegon-metrologie.com)

## PRINCIPE DE LA CALE ETALON



Afin de composer un étalon, l'utilisateur dispose de Cales de longueurs fixes (100mm, 200mm...), d'une Cale Expansible, des Cales à Bec et des Cales de liaison.

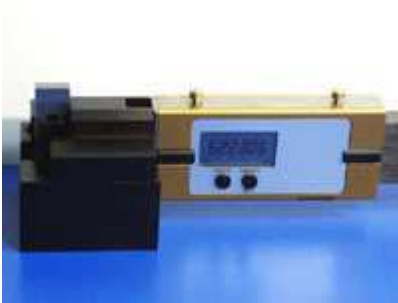


L'opérateur règle la Cale Expansible à la valeur désirée par pas de 0,01 mm.

Ex. : pour réaliser un étalon de 1.122,306mm, on utilise ici une cale de 500mm, une Cale de 100mm et la Règle Exp. est réglée sur 522,306 mm.



A chaque extrémité l'opérateur fixe une Cale à Bec permettant suivant le modèle (voir les accessoires) de s'étalonner pour un Arbre, un Alésage, un Cône etc.



La Cale une fois réglée est posée sur son Socle (voir les accessoires) avant d'être assemblée au(x) Cale(s) fixes à l'aide de Cale(s) de Liaison.



Les Cales de Liaison permettent, grâce à un système d'excentrique, d'assembler avec une grande précision les différents éléments composant l'étalon.



Les Cales fixes existent en " longueurs standard" de 100mm à 3mètres.

Pour des longueurs spécifiques à une pièce, les étalons sont réalisés sur mesure.



L'ensemble composé est alors posé sur son socle



L'opérateur vient poser son Mesureur sur l'étalon. La précision de la mesure étant d'autant plus importante que l'étalonnage de l'instrument se fait dans la configuration de mesure.



L'instrument ainsi réglé repose naturellement sur son étalon et peut ainsi être mis en production sur un poste de travail.

# CANNE CARBONE DE MESURE de 100 mm à 10 Mètres

[www.menegon-metrologie.com](http://www.menegon-metrologie.com)



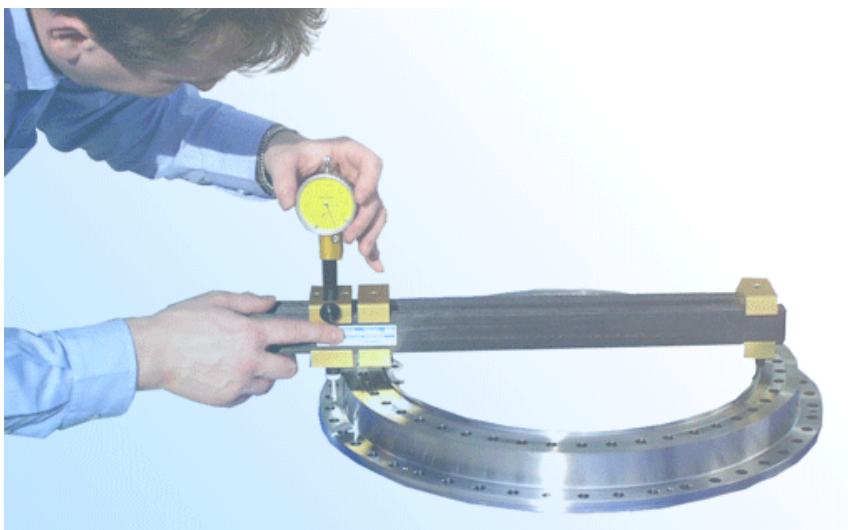
## ELEMENTS DE BASE

1. CALE EXPANSIBLE
2. CALE FIXE
3. CALE A BEC / BOUT
4. CALE DE LIAISON
5. CALES PENTEES

## ALESOMETRE



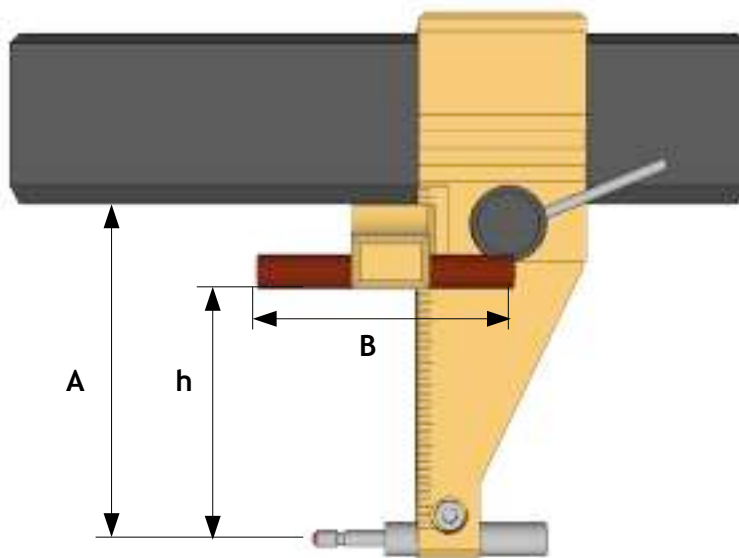
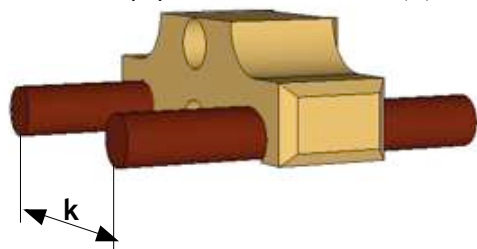
## PLONGEUR





Reference : **BP”A”/”L”**  
 Description : **BasicPro®**  
 Where :  
     **A** : Height under ruler in mm (see table below)  
     **L** : Max ID and OD in mm (Carbon Ruler)

Standard Equipment Narrow Serie (N)



MODEL	A	B		h	k	
		Std	XL		Std	W
BP65	65	60	100	0 to 60	40	80
BP85	85	60	100	0 to 80	40	80
BP120	120	60	100	0 to 115	40	80

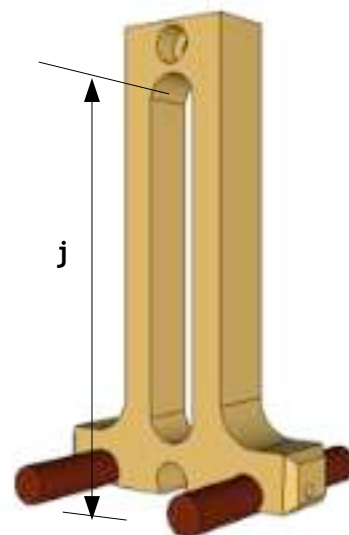
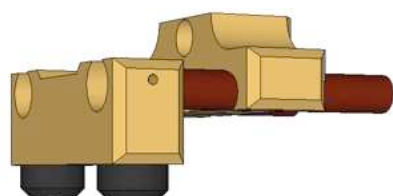
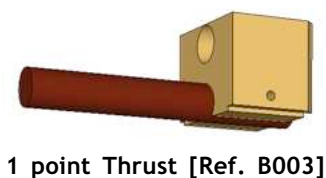
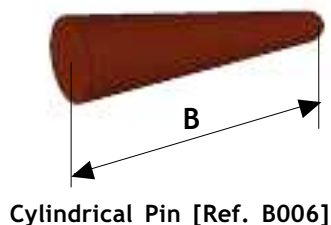
Nota : "Std" denotes "Standard Equipment"

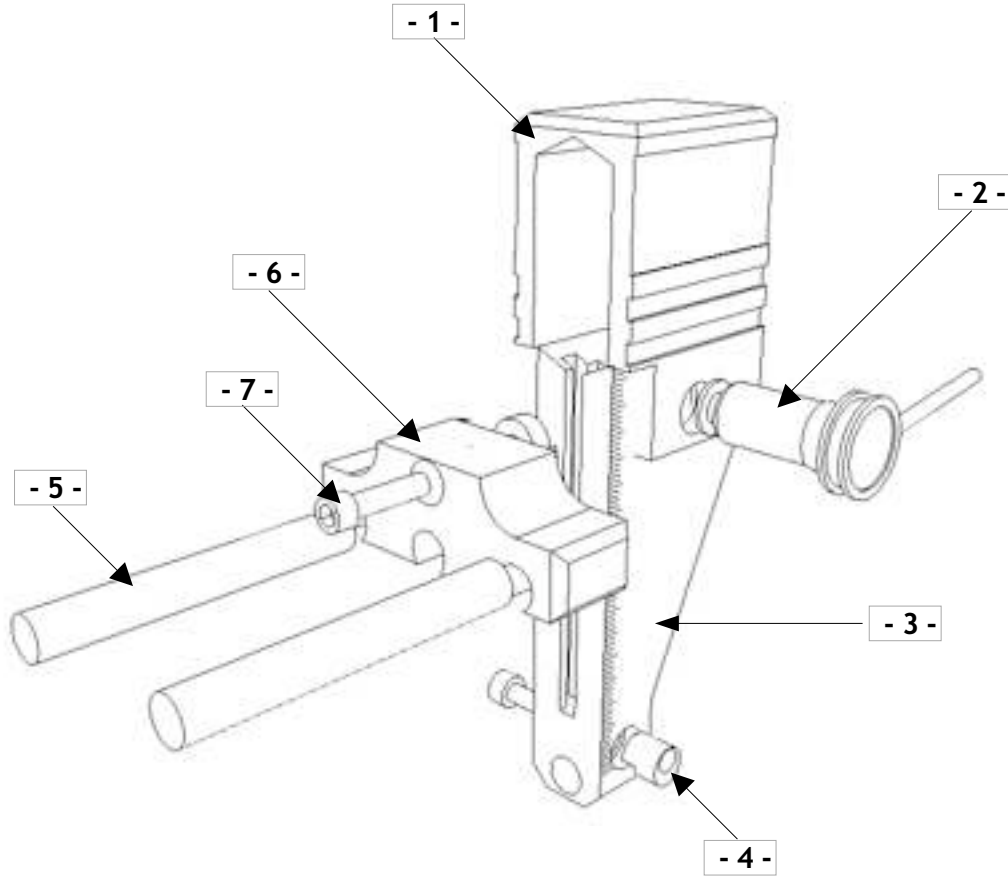
**TYPICAL USE**

The same instrument can be used for measuring Inter/Outer Diameter, Groove, Inter/Outer Cones (with/without reference on face) etc...

**EXAMPLE OF OPTIONAL EQUIPMENT**

For further accessories/information please refer to Doc Nbr : THDS





Rep	Description	Reference	Observation
1	"U" Collar	BPU	
2	Excentric	EXC001	
3	BP Fitting	BPF65/85/120	
4	Tip Lock	TL001	
5	Cylindrical Pin Ø 8mm & L=60mm	B006-60	L=80mm [Ref. B006-80] - L=100mm [Ref. B006-100]
6	Set of Thrust 2/3 Points 40mm	B001-N	Set of Thrust 2/3 Points 80mm [Ref. B001-W]
7	Thrust Lock	THL001	

Spare parts come as follow :

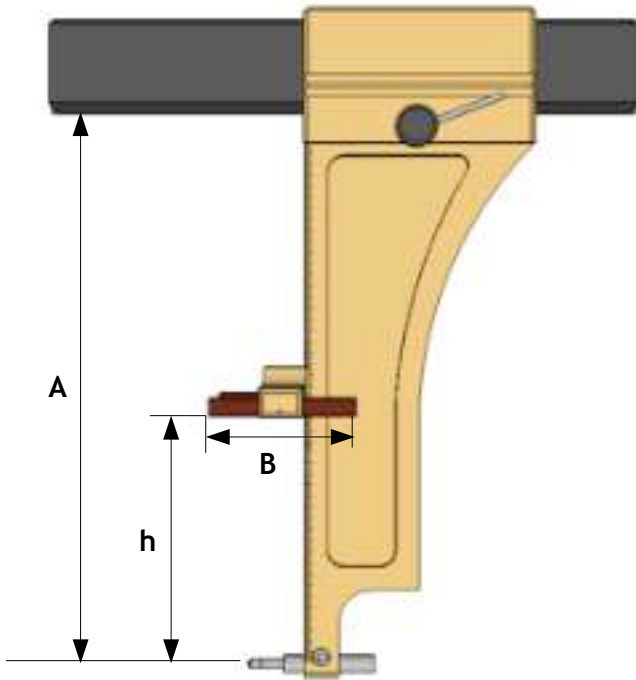
Description	Reference	Rep [qty]
BP Fitting Kit	BP65; BP85; BP120	1 - 2 - 3 -4
Set of Thrust 2/3 Points 40mm	B001-N	5 (x2) - 6 - 7 Many Different Optional Model available
Cylindrical Pin Ø 8mm	B003-N/W	5 (x2) Different Lenght Available (see THDS Document)
Excentric	EXC001	2
Tip Lock	TL001	4

Reference : **GM "A" / "L"**

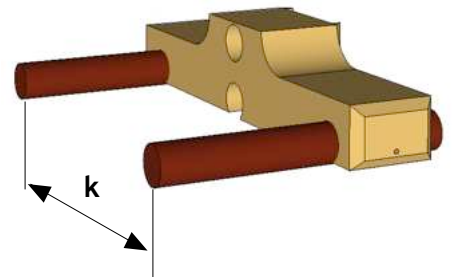
Description : **GM**

Where :

A : Height under ruler in mm (see table below)  
L : Max ID and OD in mm (Carbon Ruler)



Standard Equipment : Wide Serie (W)



MODEL	A	B		h	k	
		Std	XL		Std	N
GM "A"	150 to 300	60	100	0 to (A-50)	80	40

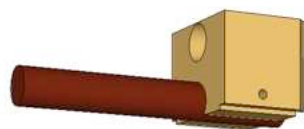
Nota : "Std" denotes "Standard Equipment"

### TYPICAL USE

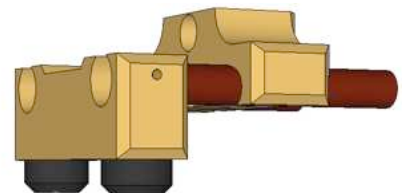
The same instrument can be used for measuring Inter/Outer Diameter, Groove, Inter/Outer Cones (with/without reference on face) etc...

### EXAMPLE OF OPTIONAL EQUIPMENT

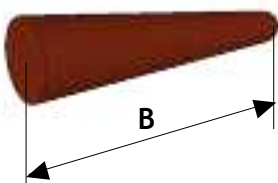
For further accessories/information please refer to Doc Nbr : THDS



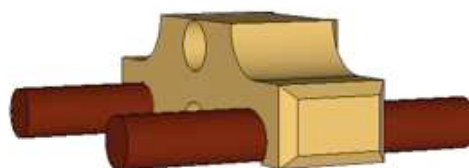
1 point Thrust [Ref. B003]



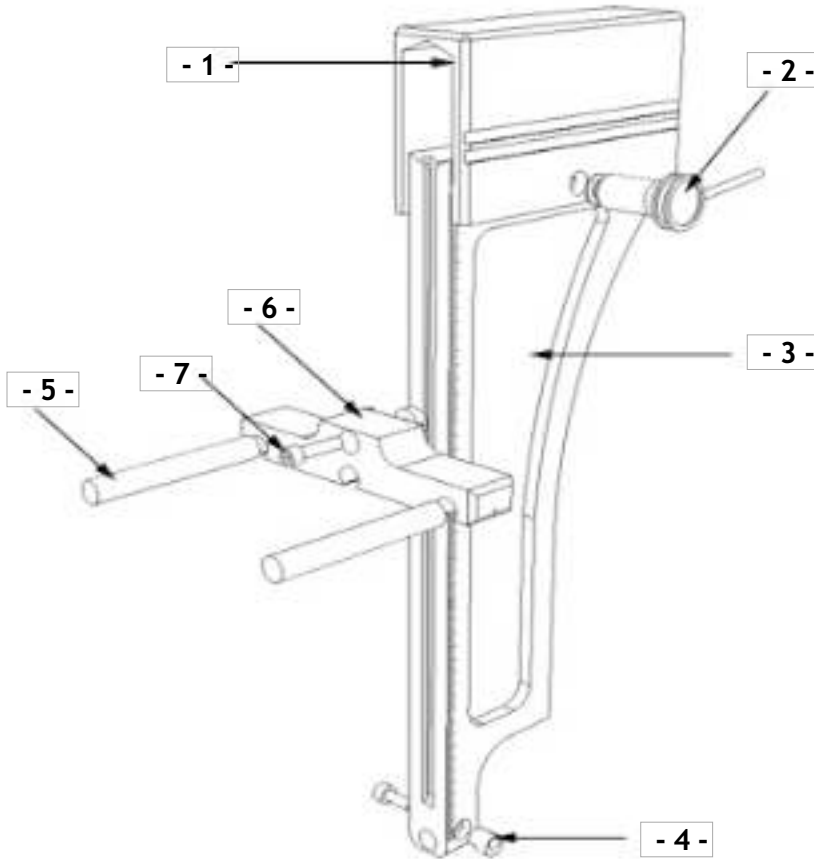
2/3 points Negative Adapter [Ref. BA002-N/W]



Cylindrical Pin [Ref. B006]



2/3 points Thrust Narrow Serie [Ref. B001-N]



Rep	Description	Reference	Observation
1	"U" Collar	GMU	
2	Excentric	EXC001	
3	GM Fitting	GMxxx	"xxx" denoting the Height (between 120 and 300mm)
4	Tip Lock	TL001	
5	Cylindrical Pin Ø 8mm & L=60mm	B006-60	L=80mm [Ref. B006-80] - L=100mm [Ref. B006-100]
6	Set of Thrust 2/3 Points 80mm	B001-W	Set of Thrust 2/3 Points 40mm [Ref. B001-N]
7	Thrust Lock	THL001	

Spare parts come as follow :

Description	Reference	Rep [qty]
GM Fitting Kit	GM150; GM200; GM250	1 - 2 - 3 -4
Set of Thrust 2/3 Points 80mm	B001-W	5 (x2) - 6 - 7 Many Different Optional Model available
Cylindrical Pin Ø 8mm	B003-N/W	5 (x2) Different Lenght Available (see THDS Document
Excentric	EXC001	2
Tip Lock	TL001	4



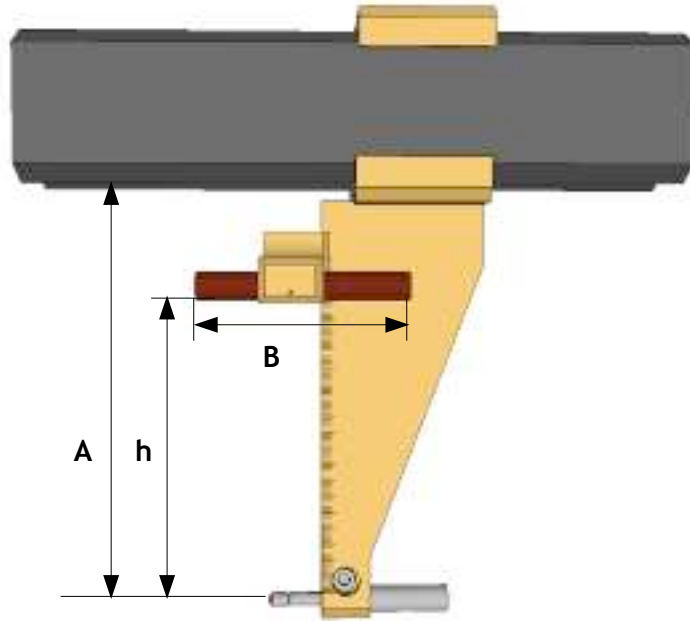
Reference : **BPR”A”/”L”**

Where :

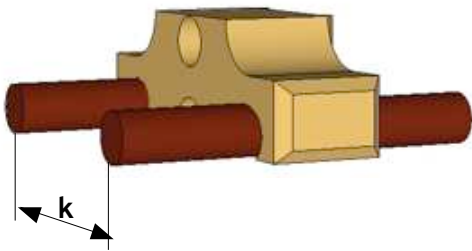
**A** : Height under ruler in mm (see table below)

**L** : Max ID and OD in mm (Carbon Ruler)

Recomended for  $L \geq 2.500\text{mm}$



Standard Equipment Narrow Serie (N)



MODEL	A	B		h	k	
		Std	XL		Std	W
BPR65	65	60	100	0 to 60	40	80
BPR85	85	60	100	0 to 80	40	80
BPR120	120	60	100	0 to 115	40	80

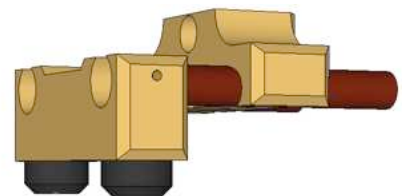
Nota : "Std" denotes "Standard Equipment"

### TYPICAL USE

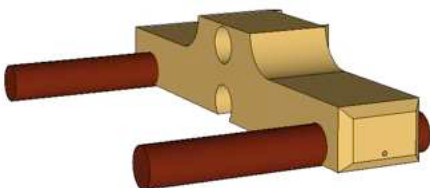
Generally recommended for Measures  $\geq 2.500\text{mm}$ . The same instrument can be used for measuring Inter/Outer Diameter, Groove, Inter/Outer Cones (with/without reference on face) etc...

### EXAMPLE OF OPTIONAL EQUIPMENT

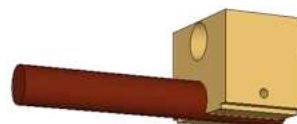
For further accessories/information please refer to Doc Nbr : THDS



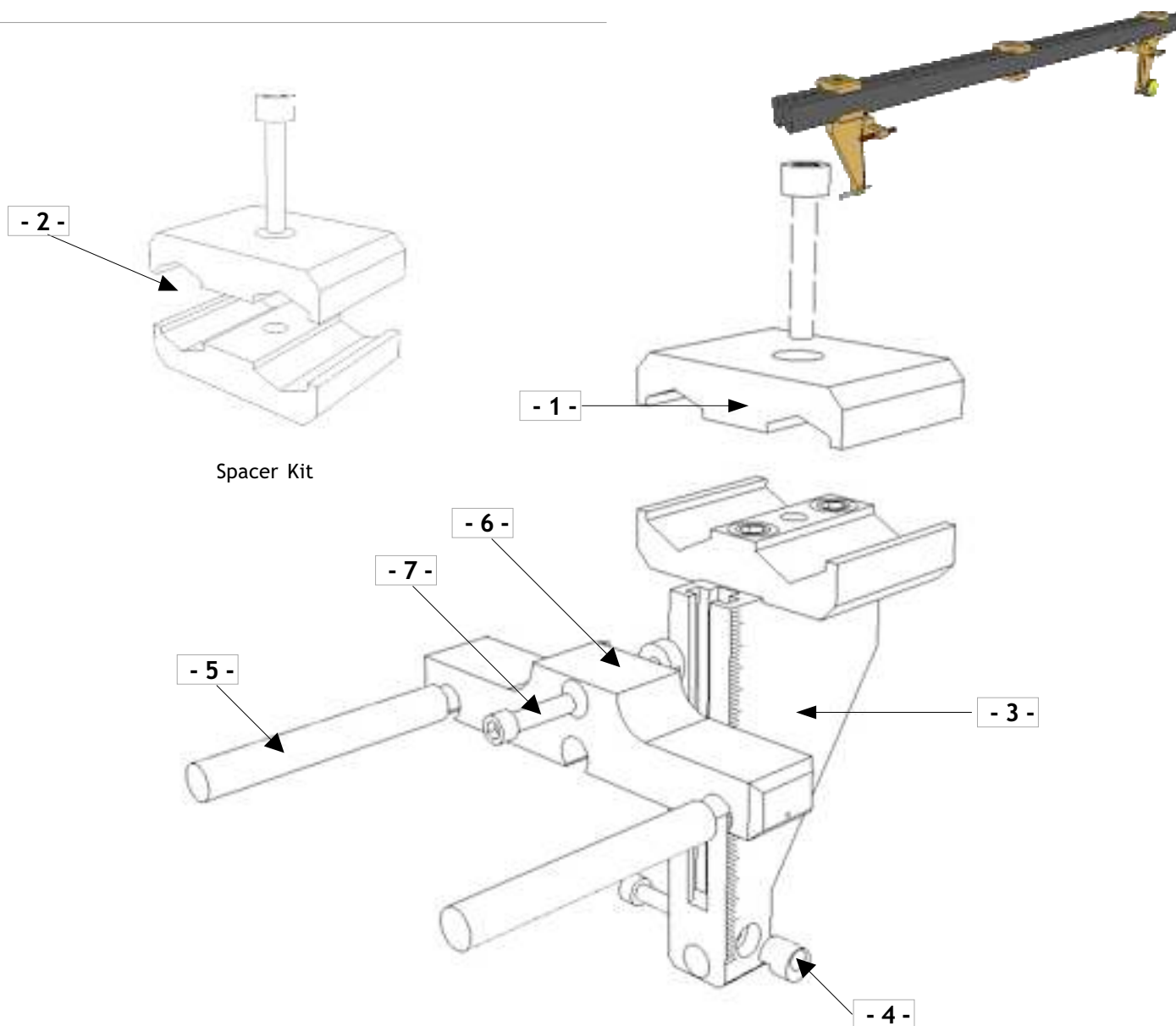
2/3 points Negative Adapter [Ref. BA002-N/W]



2/3 points Thrust Wide Serie [Ref. B001-W]



1 point Thrust [Ref. B003]



Rep	Description	Reference	Observation
1	Spacer Upper Fitting	SPU001	
2	Spacer Lower Fitting	SPL001	
3	BPR Fitting	BPRxxx	"xxx" denoting the Height (between 120 and 300mm)
4	Tip Lock	TL001	
5	Cylindrical Pin Ø 8mm & L=60mm	B006-60	L=80mm [Ref. B006-80] - L=100mm [Ref. B006-100]
6	Set of Thrust 2/3 Points 40mm	B001-N	Set of Thrust 2/3 Points 80mm [Ref. B001-W]
7	Thrust Lock	THL001	

Spare parts come as follow :

Description	Reference	Rep [qty]
BPR Fitting Kit	BPR65; BPR85; BPR120	1 - 3 - 4 (Screw included)
Set of Thrust 2/3 Points 40mm	B001-N	5 (x2) - 6 - 7 Many Different Optional Model available
Cylindrical Pin Ø 8mm	B003-N/W	5 (x2) Different Length Available (see THDS Document)
Ruler Spacer Kit	BS001	1 - 2 (Screw included)
Tip Lock	TL001	4

Reference : **GMR"A"/"L"**

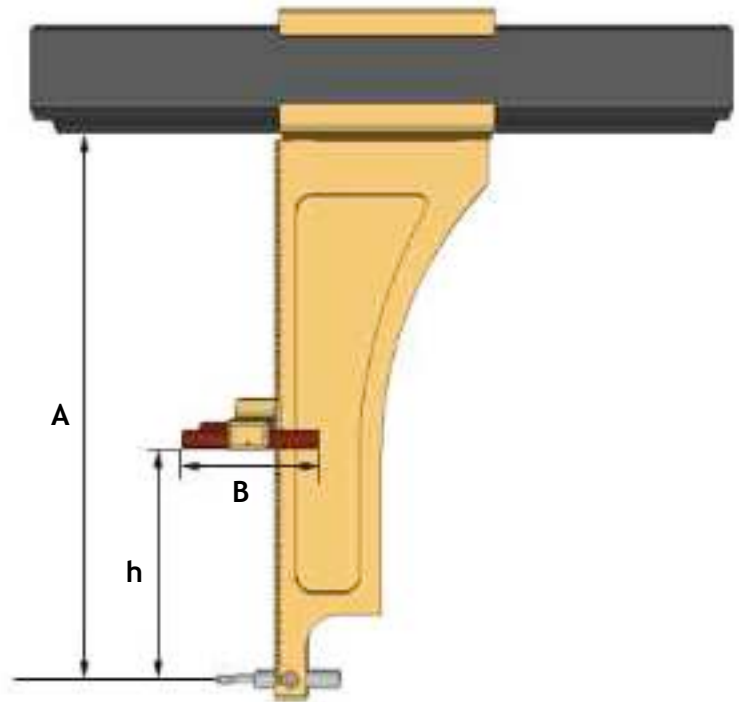
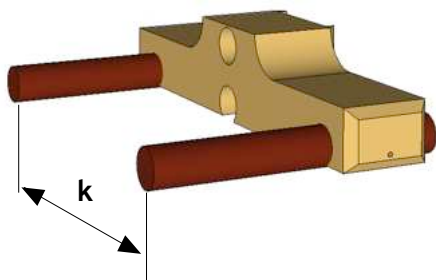
Where :

A : Height under ruler in mm (see table bellow)  
L : Max Diameter in mm

Recomended for  $L \geq 2.500\text{mm}$



Standard Equipment : Wide Serie (W)



MODEL	A	B		h	k	
		Std	XL		Std	N
<b>GMR"A"</b>	150 to 350	60	100	0 to (A-55)	80	40

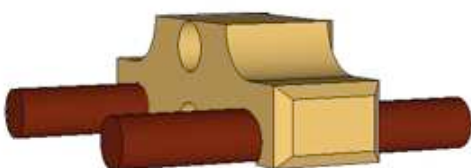
Nota : "Std" denotes "Standard Equipment"

**TYPICAL USE**

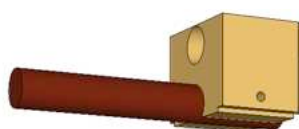
Generally recommended for Measures  $\geq 2.500\text{mm}$ . The same instrument can be used for measuring Inter/Outer Diameter, Groove, Inter/Outer Cones (with/without reference on face) etc...

**EXAMPLE OF OPTIONAL EQUIPMENT**

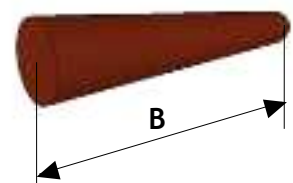
For further accessories/information please refer to Doc Nbr : THDS



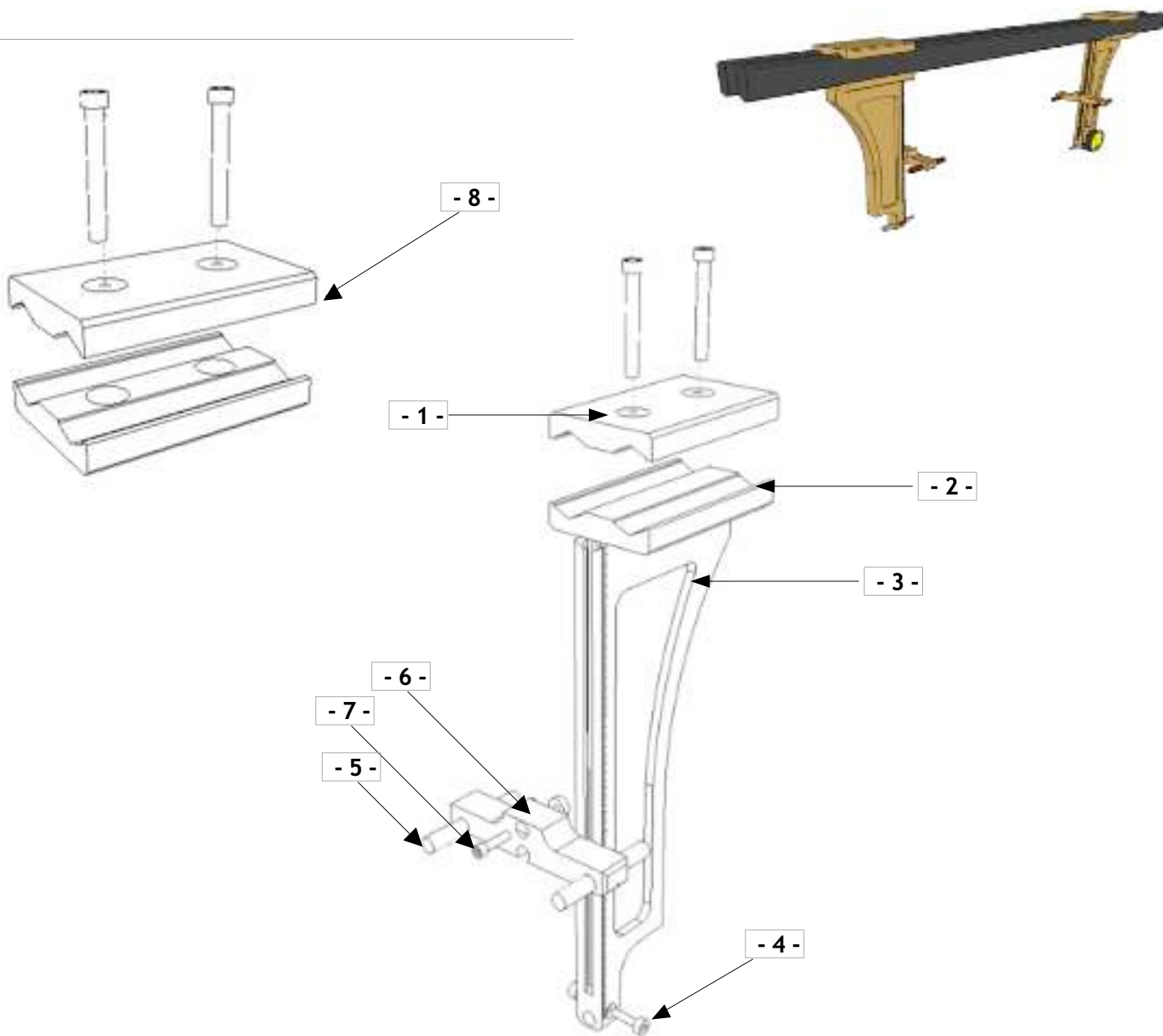
2/3 points Thrust Narrow Serie [Ref. B001-N/W]



1 point Thrust [Ref. B003]



Cylindrical Pin [Ref. B006]



Rep	Description	Reference	Observation
1	Upper Fitting	LSPU001	
2	Spacer Lower Fitting	LSPL001	
3	GMR Fitting	GMRxxx	"xxx" denoting the Height (between 120 and 300mm)
4	Tip Lock	TL001	
5	Cylindrical Pin Ø 8mm & L=60mm	B006-60	L=80mm [Ref. B006-80] - L=100mm [Ref. B006-100]
6	Set of Thrust 2/3 Points 80mm	B001-W	Set of Thrust 2/3 Points 40mm [Ref. B001-N]
7	Thrust Lock	THL001	
8	Spacer Upper Fitting	LSPU001	

Spare parts come as follow :

Description	Reference	Rep [qty]
GMR Fitting Kit	GMR150;GMR200;GMR250	1 - 3 - 4 (Screw included)
Set of Thrust 2/3 Points 80mm	B001-W	5 (x2) - 6 - 7 Many Different Optional Model available
Cylindrical Pin Ø 8mm	B003-N/W	5 (x2) Different Length Available (see THDS Document)
Ruler Spacer Kit	BS001	1 - 2 (Screw included)
Tip Lock	TL001	4

Reference : **BPP”A”/”L”**

Description : **BasicPro®**

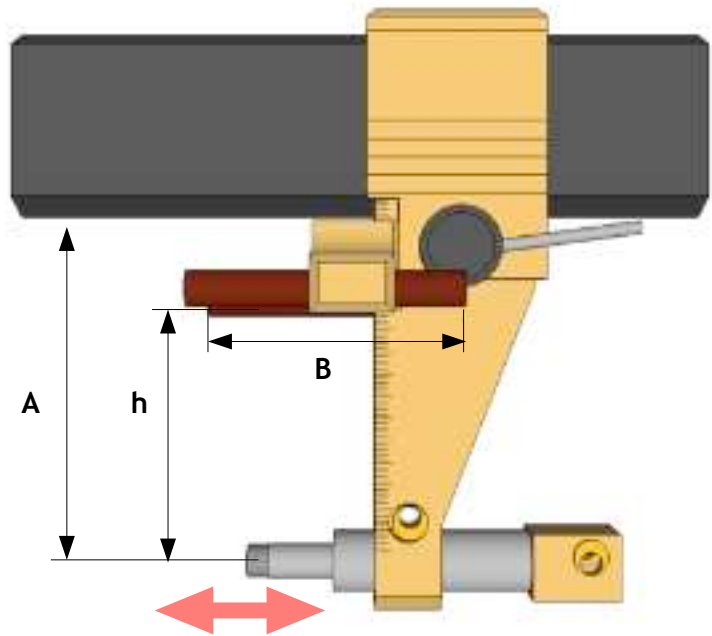
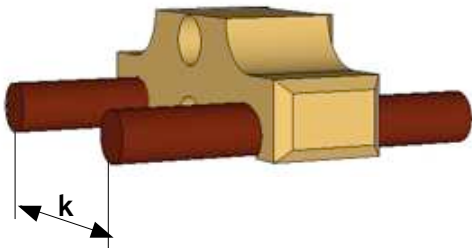
Where :

A : Height under ruler in mm (see table bellow)

L : Max Diameter in mm



Standard Equipment Narrow Serie (N)



MODEL	A	B		h	k	
		Std	XL		Std	W
BPP65	65	60	100	5 to 60	40	80
BPP85	85	60	100	5 to 80	40	80
BPP120	120	60	100	5 to 115	40	80

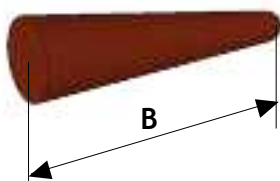
Nota : "Std" denotes "Standard Equipment"

### TYPICAL USE

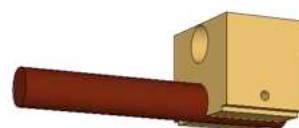
Especially designed to measure Rollway (Bearing Industry), this instrument can be used for measuring Inter/Outer Diameter, Groove, Inter/Outer Cones (with/without reference on face) etc...

### EXAMPLE OF OPTIONAL EQUIPMENT

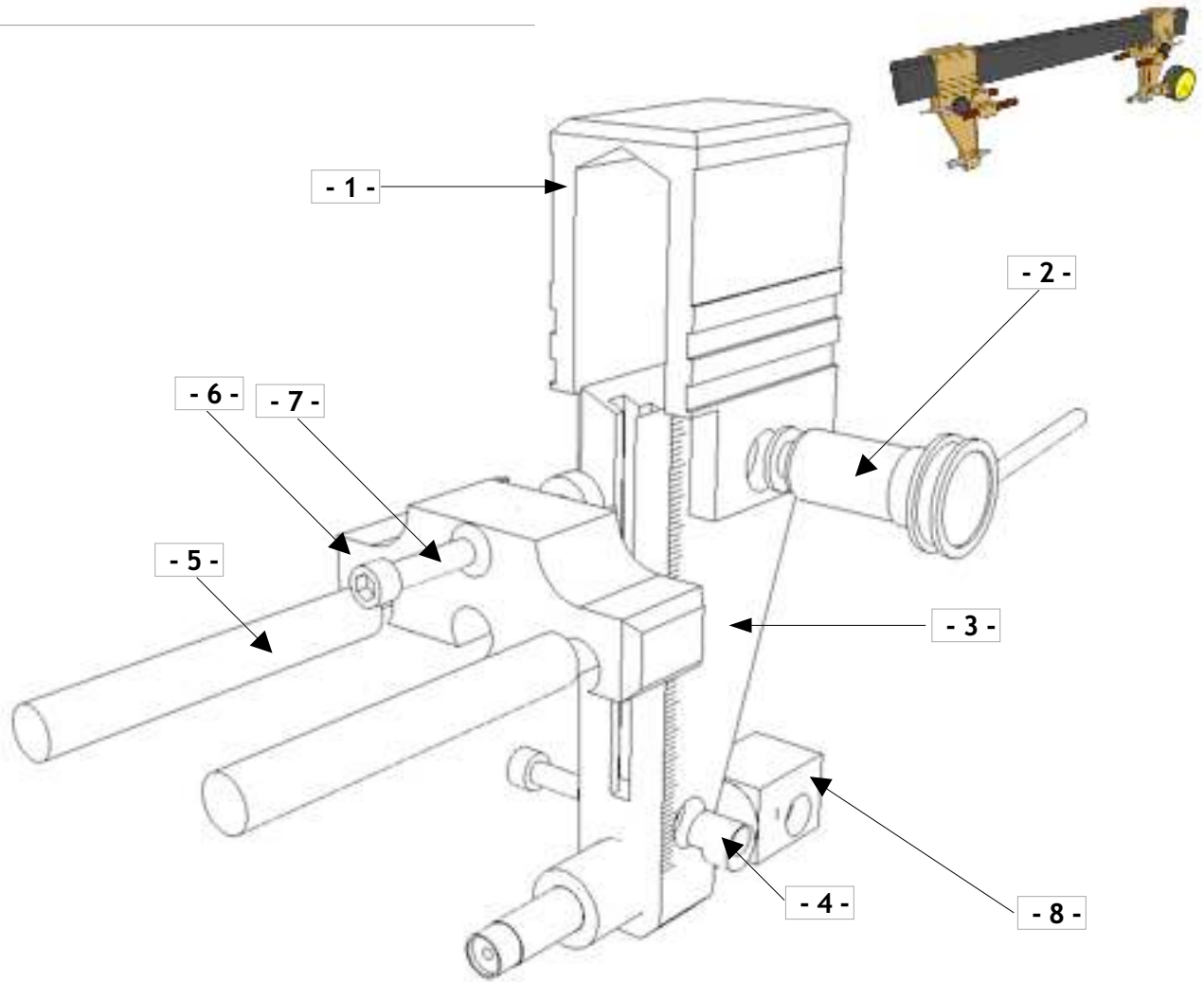
For further accessories/information please refer to Doc Nbr : THDS



Cylindrical Pin [Ref. B006]



1 point Thrust [Ref. B003]



Rep	Description	Reference	Observation
1	"U" Collar	BPU	
2	Excentric	EXC001	
3	BPP Fitting	BPPF65/85/120	
4	Tip Lock	TL001	
5	Cylindrical Pin $\varnothing$ 8mm & L=60mr	B006-60	L=80mm [Ref. B006-80] - L=100mm [Ref. B006-100]
6	Set of Thrust 2/3 Points 40mm	B001-N	Set of Thrust 2/3 Points 80mm [Ref. B001-W]
7	Thrust Lock	THL001	
8	Piston Kit	PK001	

Spare parts come as follow :

Description	Reference	Rep [qty]
BP Fitting Kit	BPP65; 85; 120	1 - 2 - 3 - 4
Thrust Kit	B001-N/W	5 (x2) - 6 - 7 Many Different Optional Model available
Cylindrical Pin	B003-N/W	5 (x2) Different Lenght Available (see THDS Document)
Excentric	EXC001	2
Tip Lock	TL001	4
Piston Kit	PK001	8

Reference : **BPRP "A" / "L"**

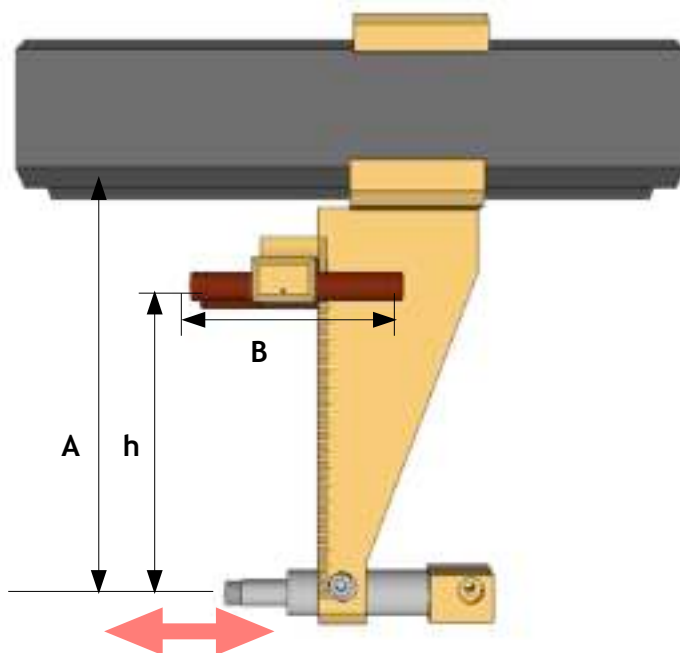
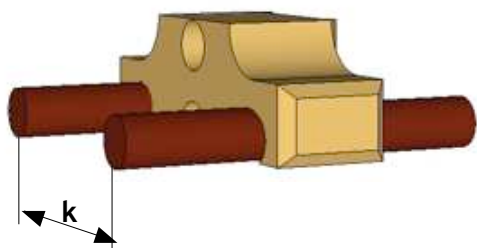
Where :

A : Height under ruler in mm (see table bellow)  
L : Max Diameter in mm

Recomended for  $L \geq 2.500\text{mm}$



Standard Equipment Narrow Serie (N)



MODEL	A	B		h	k	
		Std	XL		Std	W
BPRP65	65	60	100	5 to 60	40	80
BPRP85	85	60	100	5 to 80	40	80
BPRP120	120	60	100	5 to 115	40	80

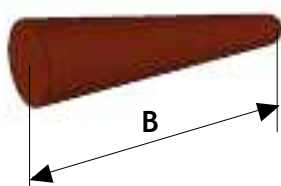
Nota : "Std" denotes "Standard Equipment"

**TYPICAL USE**

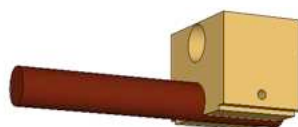
Especially designed to measure Rollway in large Bearings, this instrument can be used for measuring Inter/Outer Diameter, Groove, Inter/Outer Cones (with/without reference on face) etc...

**EXAMPLE OF OPTIONAL EQUIPMENT**

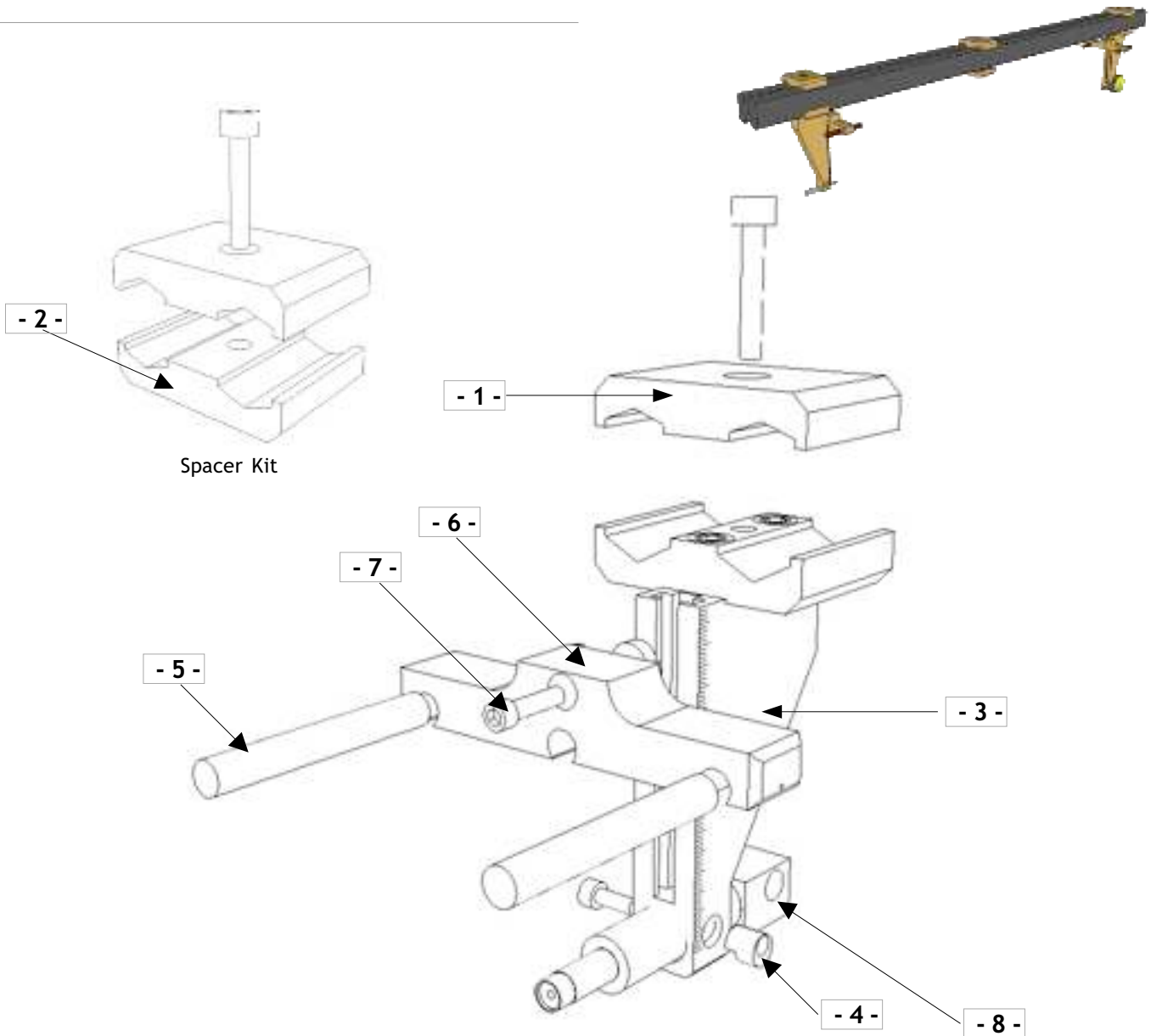
For further accessories/information please refer to Doc Nbr : THDS



Cylindrical Pin [Ref. B006]



1 point Thrust [Ref. B003]



Rep	Description	Reference	Observation
1	Spacer Upper Fitting	SPU001	
2	Spacer Lower Fitting	SPL001	
3	BPR Fitting	BPRPxxx	"xxx" denoting the Height (between 120 and 300mm)
4	Tip Lock	TL001	
5	Cylindrical Pin Ø 8mm & L B006-60		L=80mm [Ref. B006-80] - L=100mm [Ref. B006-100]
6	Set of Thrust 2/3 Points 4 B001-N		Set of Thrust 2/3 Points 80mm [Ref. B001-W]
7	Thrust Lock	THL001	
8	Piston Kit	PK001	

Spare parts come as follow :

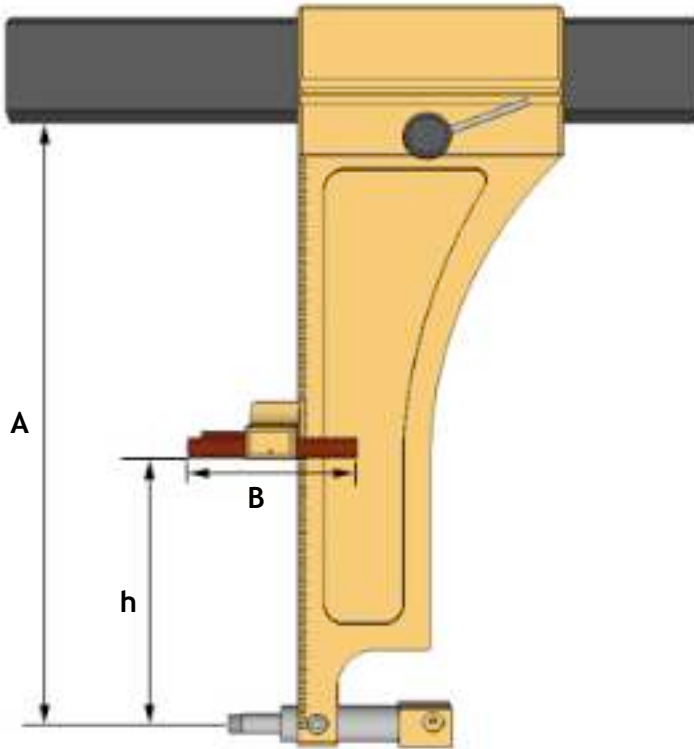
Description	Reference	Rep [qty]
BPRP Fitting Kit	BPRP65; 85; 120	1 - 3 - 4 (Screw included)
Thrust Kit	B00i-N/W	5 (x2) - 6 - 7 Many Different Optional Model available
Cylindrical Pin	B003-N/W	5 (x2) Different Lenght Available (see THDS Document)
Bar Spacer	BS001	1 - 2 (Screw included)
Tip Lock	TL001	4
Piston Kit	PK001	8



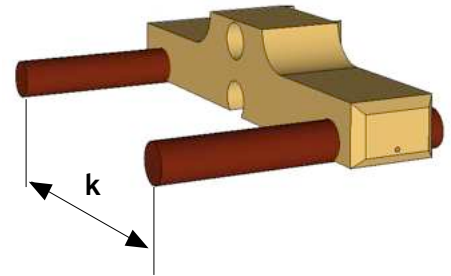
Reference : **GMP"A"/"L"**

Where :

A : Height under ruler in mm (see table below)  
L : Max Diameter in mm



Standard Equipment : Wide Serie (W)



MODEL	A	B		h	k	
		Std	XL		Std	N
<b>GMP"A"</b>	120 to 300	60	100	0 to (A-50)	80	40

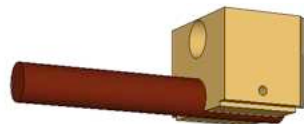
Nota : "Std" denotes "Standard Equipment"

**TYPICAL USE**

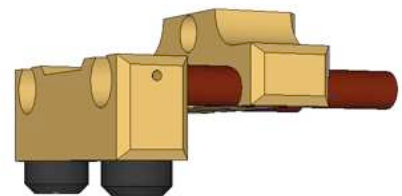
The same instrument can be used for measuring Inter/Outer Diameter, Groove, Inter/Outer Cones (with/without reference on face) etc...

**EXAMPLE OF OPTIONAL EQUIPMENT**

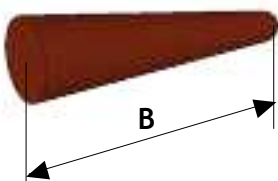
For further accessories/information please refer to Doc Nbr : THDS



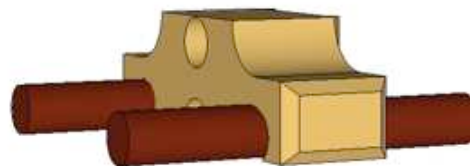
1 point Thrust [Ref. B003]



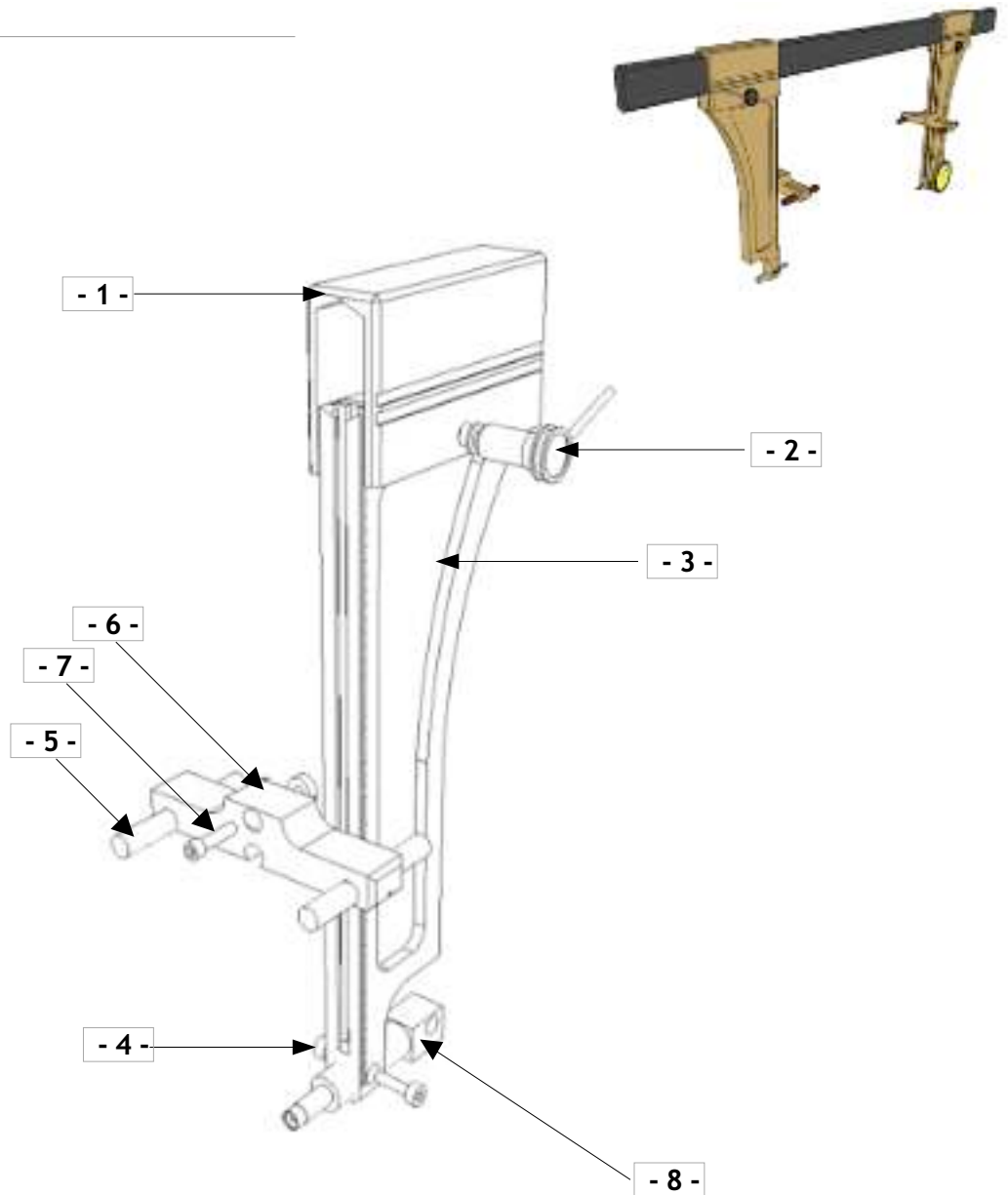
2/3 points Negative Adapter [Ref. BA002-N/W]



Cylindrical Pin [Ref. B006]



2/3 points Thrust Narrow Serie [Ref. B001-N]



Rep	Description	Reference	Observation
1	"U" Collar	GMU	
2	Excentric	EXC001	
3	GM Fitting	GMxxx	"xxx" denoting the Height (between 120 and 300mm)
4	Tip Lock	TL001	
5	Cylindrical Pin Ø 8mm & L=60mm	B006-60	L=80mm [Ref. B006-80] - L=100mm [Ref. B006-100]
6	Set of Thrust 2/3 Points 80mm	B001-W	Set of Thrust 2/3 Points 40mm [Ref. B001-N]
7	Thrust Lock	THL001	
8	Piston Kit	PK001	

Spare parts come as follow :

Description	Reference	Rep [qty]
GM Fitting Kit	GM150 -GM200 -GM250	1 - 2 - 3 -4
Thrust Kit	B00i-N/W	5 (x2) - 6 - 7 Many Different Optional Model available
Cylindrical Pin	B003-N/W	5 (x2) Different Lenght Available (see THDS Document)
Excentric	EXC001	2
Tip Lock	TL001	4

Reference : **GMRP "A" / "L"**

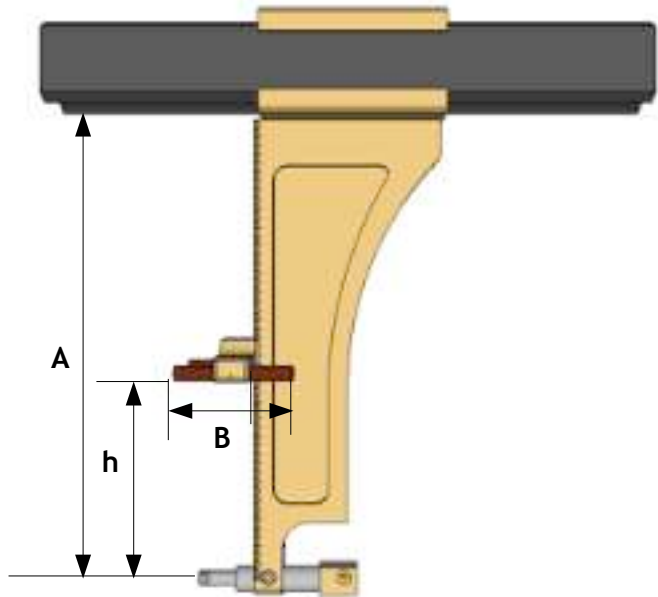
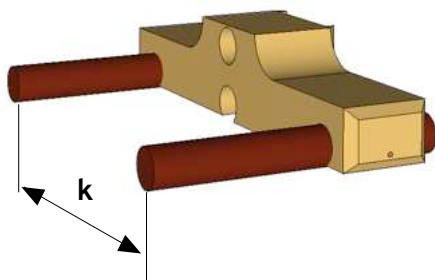
Where :

A : Height under ruler in mm (see table bellow)  
L : Max Diameter in mm

Recomended for  $L \geq 2.500\text{mm}$



Standard Equipment : Wide Serie (W)



MODEL	A	B		h	k	
		Std	XL		Std	N
GMRP "A"	175 to 355	60	100	5 to (A-55)	80	40

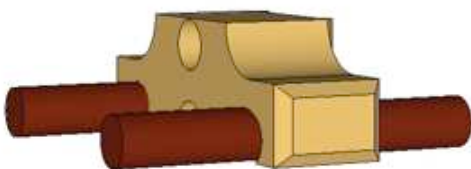
Nota : "Std" denotes "Standard Equipment"

**TYPICAL USE**

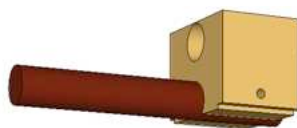
Generally recommended for Measures  $\geq 2.500\text{mm}$ . The same instrument can be used for measuring Inter/Outer Diameter, Groove, Inter/Outer Cones (with/without reference on face) etc...

**EXAMPLE OF OPTIONAL EQUIPMENT**

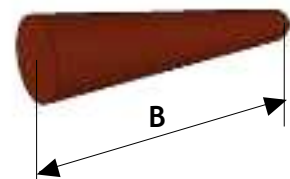
For further accessories/information please refer to Doc Nbr : THDS



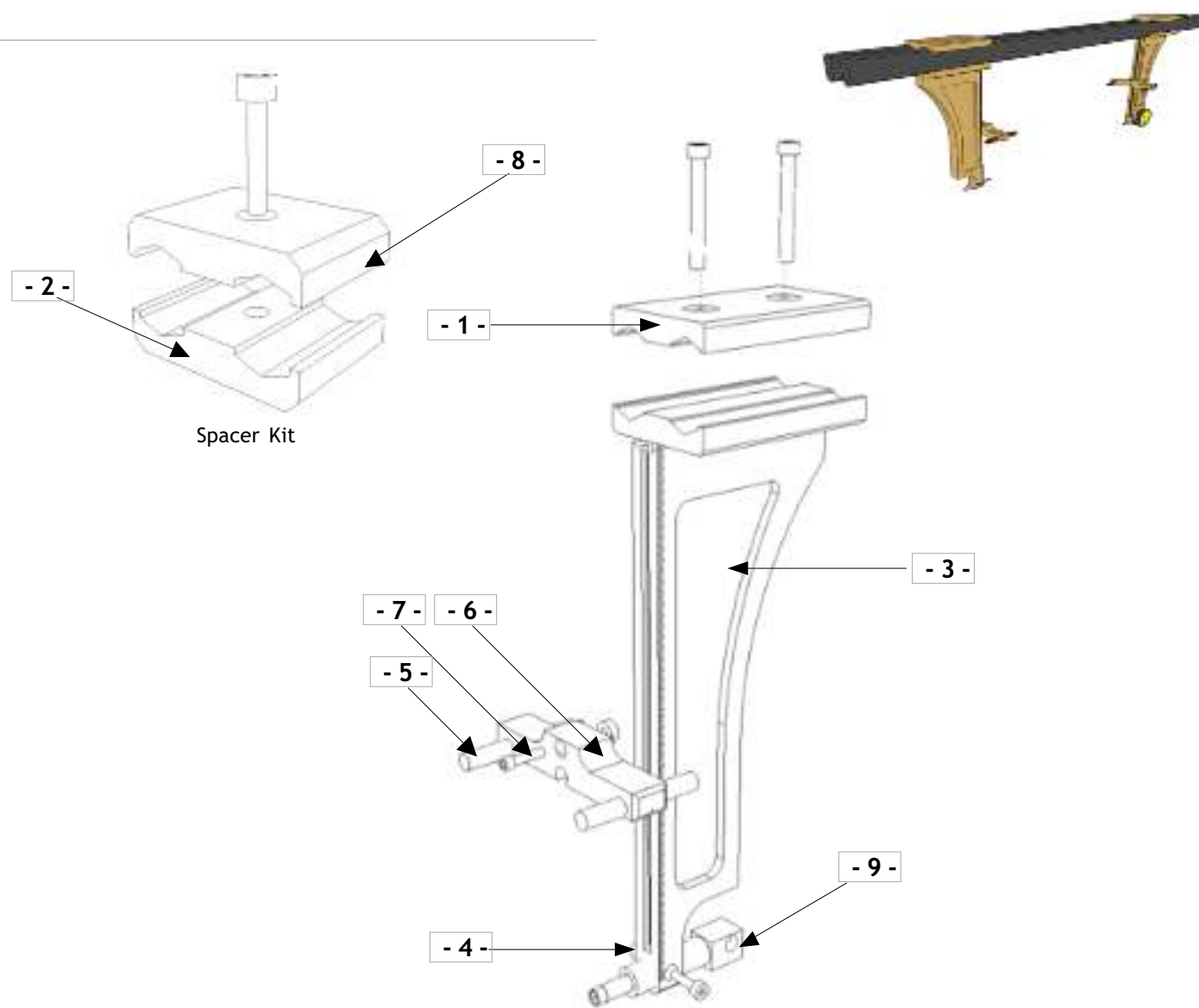
2/3 points Thrust Narrow Serie [Ref. B001-N/W]



1 point Thrust [Ref. B003]



Cylindrical Pin [Ref. B006]



Rep	Description	Reference	Observation
1	Upper Fitting	LSPU001	
2	Spacer Lower Fitting	LSPL001	
3	GMR Fitting	GMRxxx	"xxx" denoting the Height (between 120 and 300mm)
4	Tip Lock	TL001	
5	Cylindrical Pin Ø 8mm & L=60mn B006-60		L=80mm [Ref. B006-80] - L=100mm [Ref. B006-100]
6	Set of Thrust 2/3 Points 80mm B001-W		Set of Thrust 2/3 Points 40mm [Ref. B001-N]
7	Thrust Lock	THL001	
8	Spacer Upper Fitting	LSPU001	
9	Piston Kit	PK001	

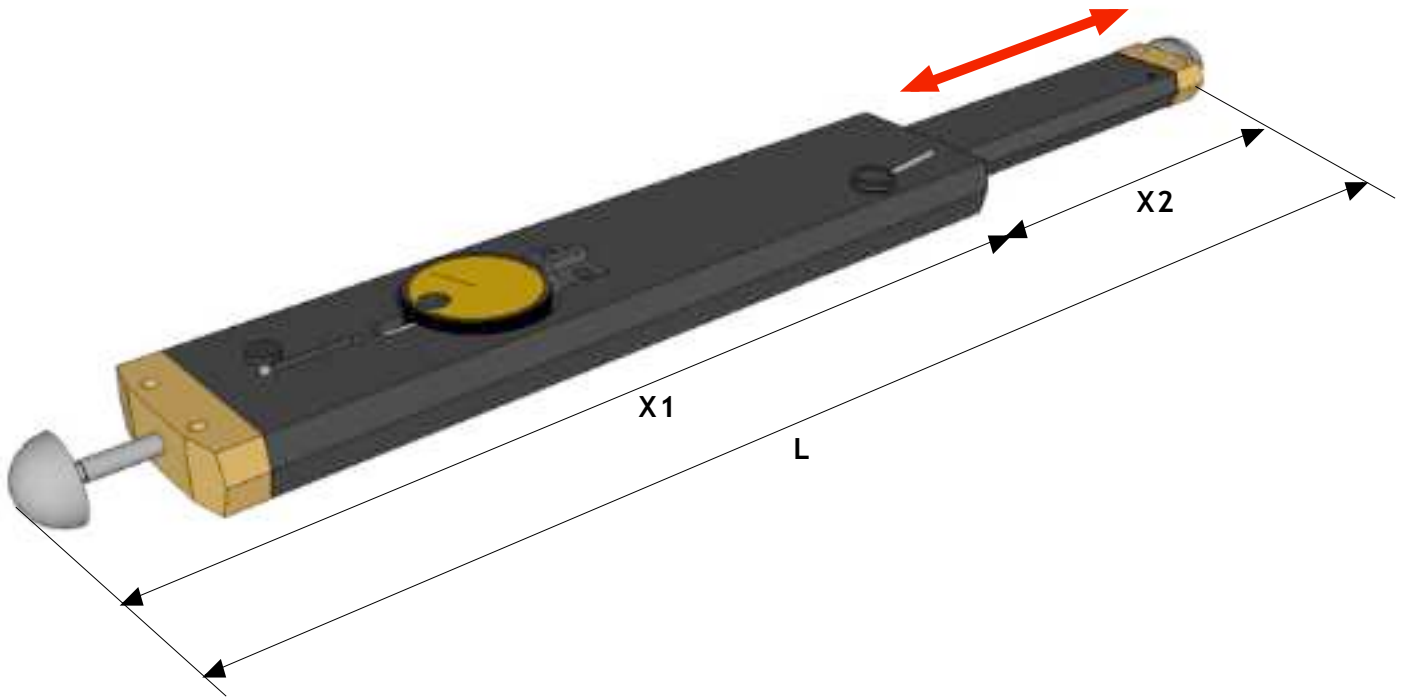
Spare parts come as follow :

Description	Reference	Rep [qty]
BPR Fitting Kit	BPR65; BPR85; BPR120	1 - 3 - 4 (Screw included)
Thrust Kit	B00i-N/W	5 (x2) - 6 - 7 Many Different Optional Model available
Cylindrical Pin	B003-N/W	5 (x2) Different Lenght Available (see THDS Document)
Bar Spacer	BS001	8 - 2 (Screw included)
Tip Lock	TL001	4
Piston Kit	PK001	9

Reference : **AL "X1"/"L"**

Where :

- X1 : Fixe Part
- L : Maximum capacity measurement
- X2 : Mobile Part

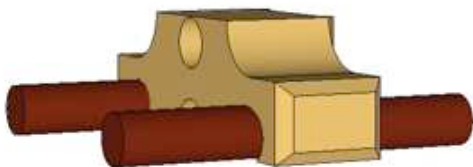


Model	X1	X2	L
AL X1/ L	400 to 4.000 mm	200 mm	$L=X1 + X2$

**TYPICAL USE**

Generally recommended for Measures deep Inner Diameters

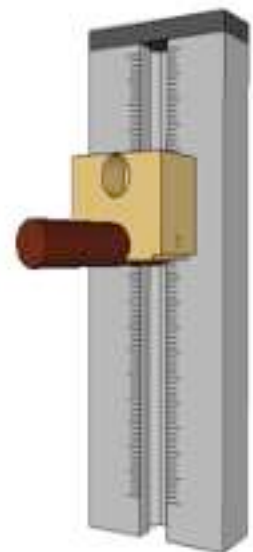
**EXAMPLE OF OPTIONAL EQUIPMENT**



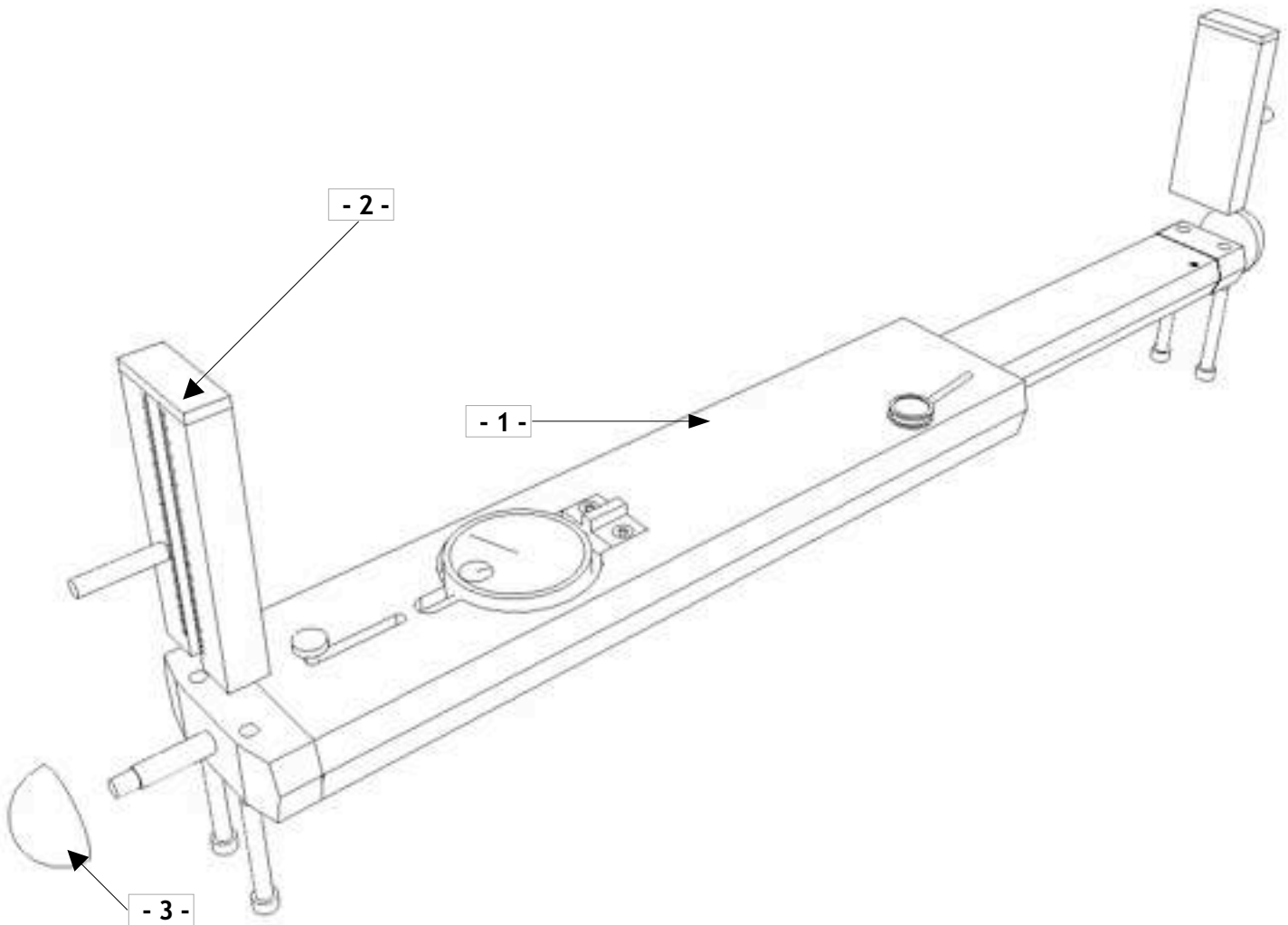
2/3 points Thrust Narrow Serie [Ref. B001-N]



2/3 points Thrust Wide Serie [Ref. B001-W]



Fixture For Alesometer [Ref. FIX "h"]



Rep	Description	Reference	Observation
1	Alesometer Telescopic	AL X1/X2	
2	Set of Fixtures for Alesometer	FIX "h"	"h" Height mm + set of 1 Point Thrust (Ref. B003)
3	Set of Balls	BALxx	"xx" denoting the ball Diameter

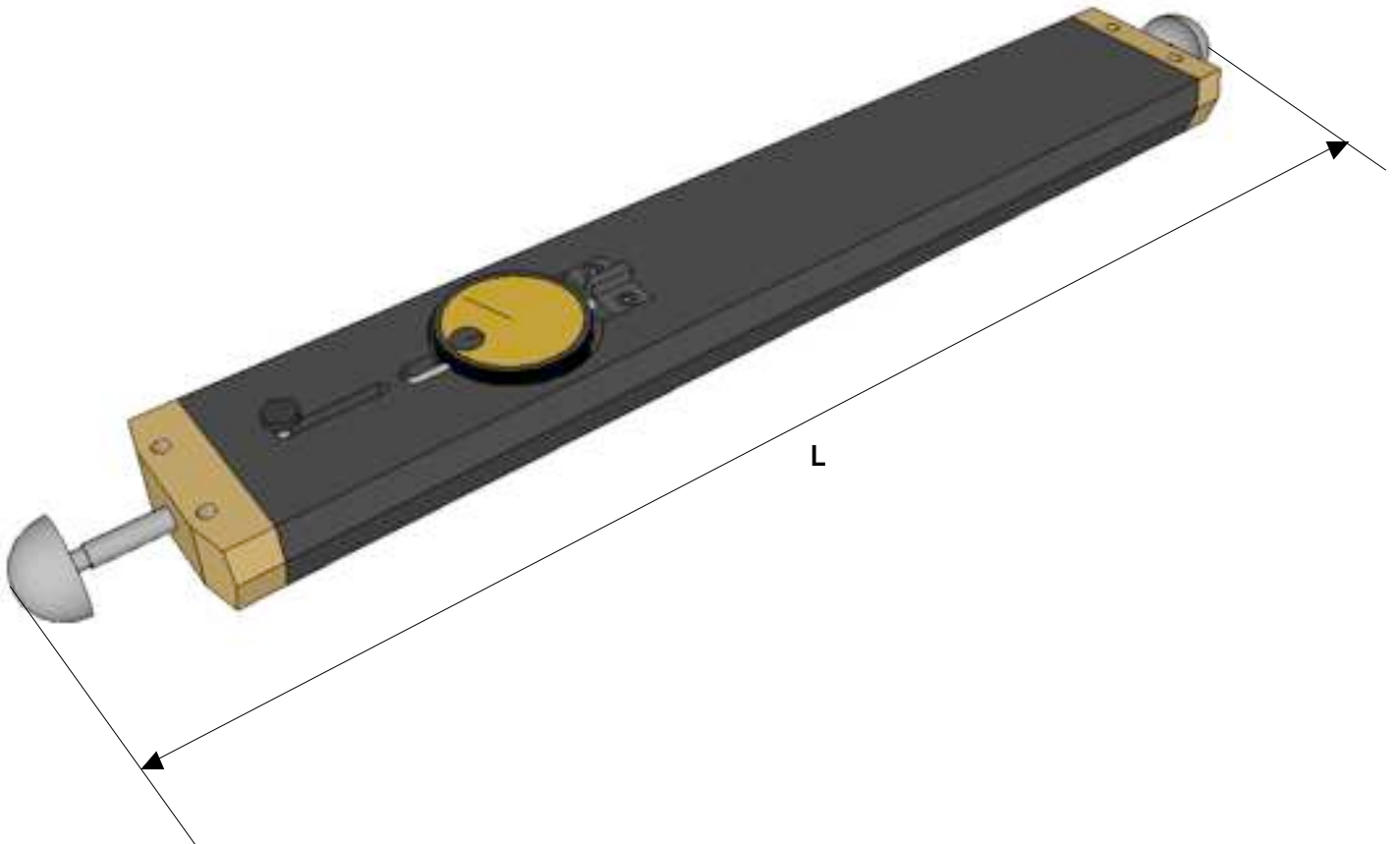
Spare parts come as follow :

Description	Reference	Rep [qty]
Alesometer Fitting Kit	AL X1/X2	1 (Screw included - without Dial Gauge)
Set of Fixtures for Alesometer	FIX "h"	2 (X2) Many Different Optional Model available
Set of Balls	BALxx	3 (x2) Different Diameter Available

Reference : **AL”L”**

Where :

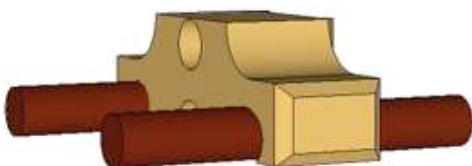
L : Maximum capacity measurement



### TYPICAL USE

Generally recommended for Measures deep Inner Diameters

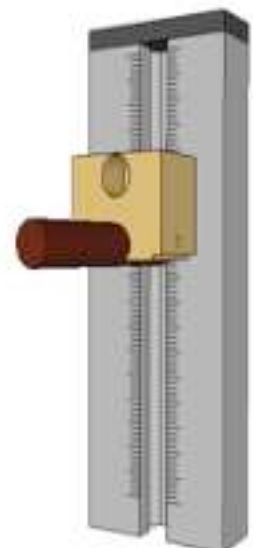
### EXAMPLE OF OPTIONAL EQUIPMENT



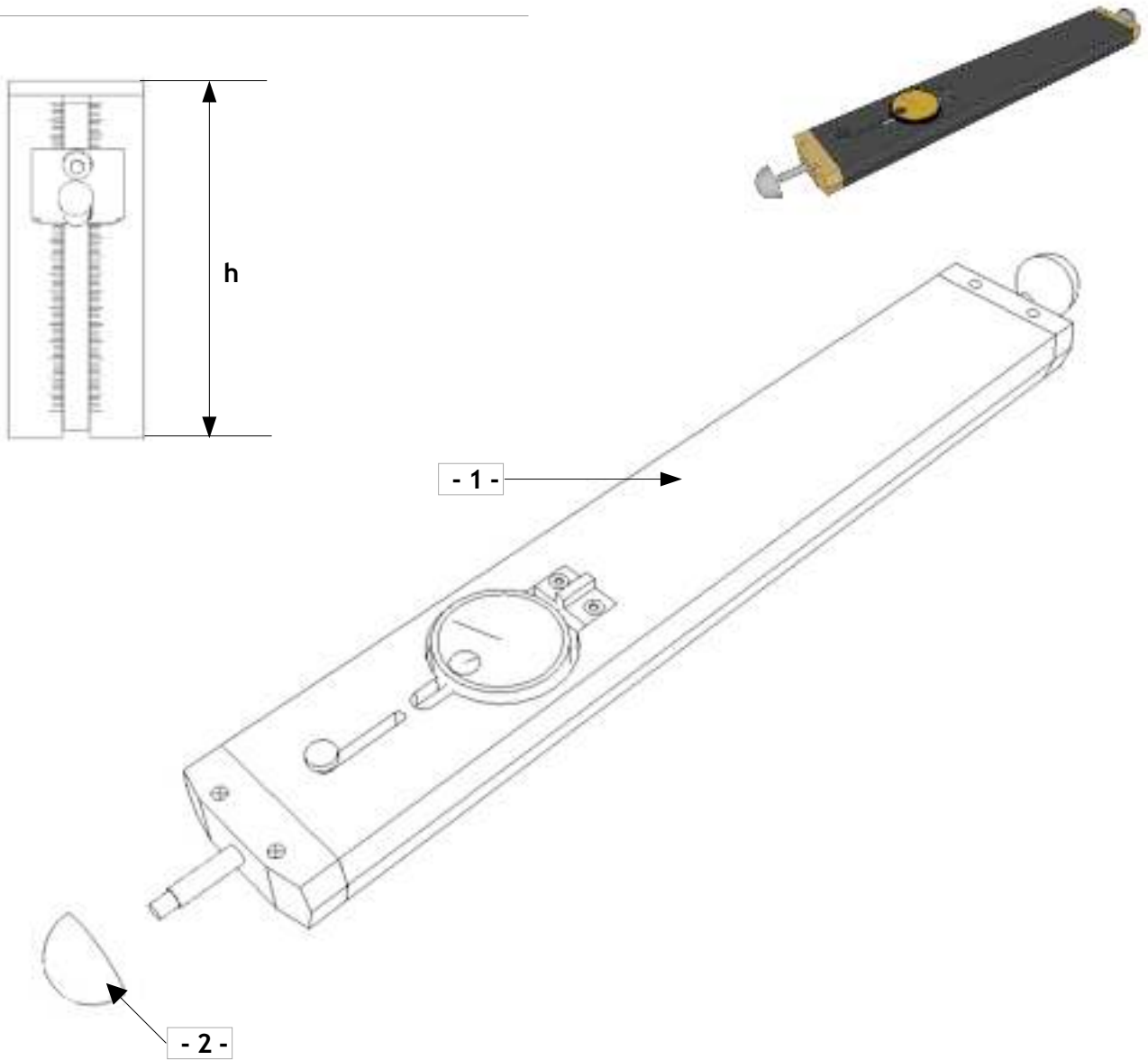
2/3 points Thrust Narrow Serie [Ref. B001-N]



2/3 points Thrust Wide Serie [Ref. B001-W]



Fixture For Alesometer [Ref. FIX “h”]



Rep	Description	Reference	Observation
1	Alesometer	AL "L"	
2	Set of Balls	BAL xx	"xx" denoting the ball Diameter

Spare parts come as follow :

Description	Reference	Rep [qty]
Alesometer Fitting Kit	AL "L"	1 (Screw included - without Dial Gauge)
Set of Fixtures for Alesometer	FIX "h"	2 (X2) Many Different Optional Model available
Set of Balls	BALxx	3 (x2) Different Diameter Available



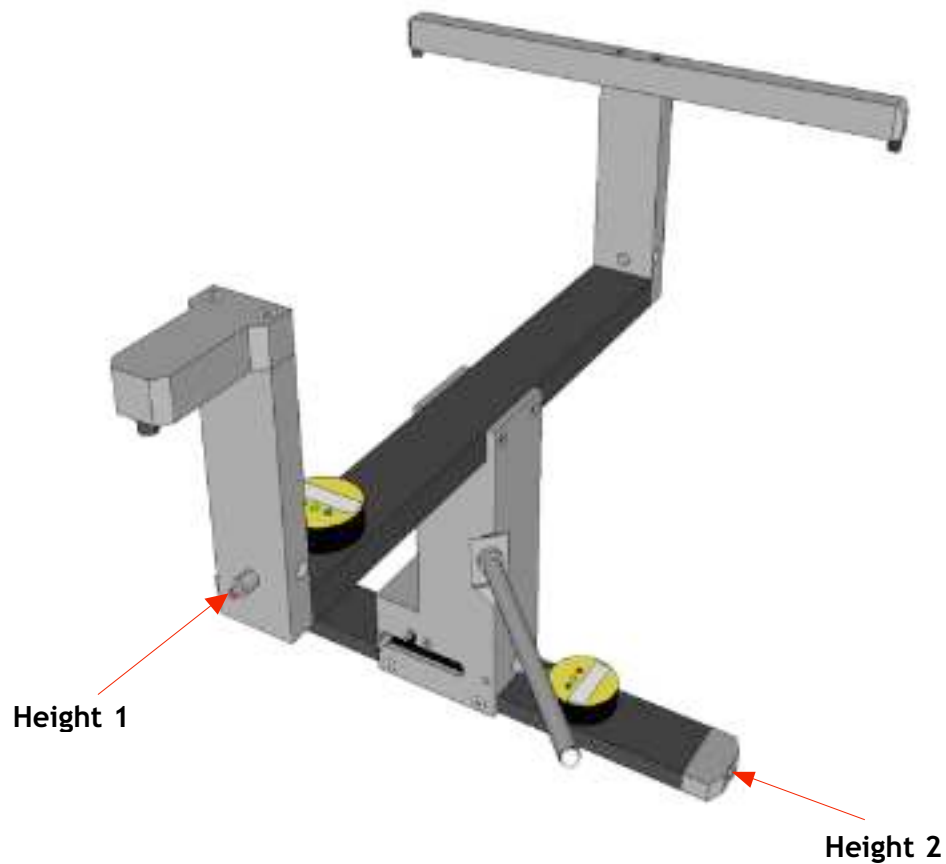
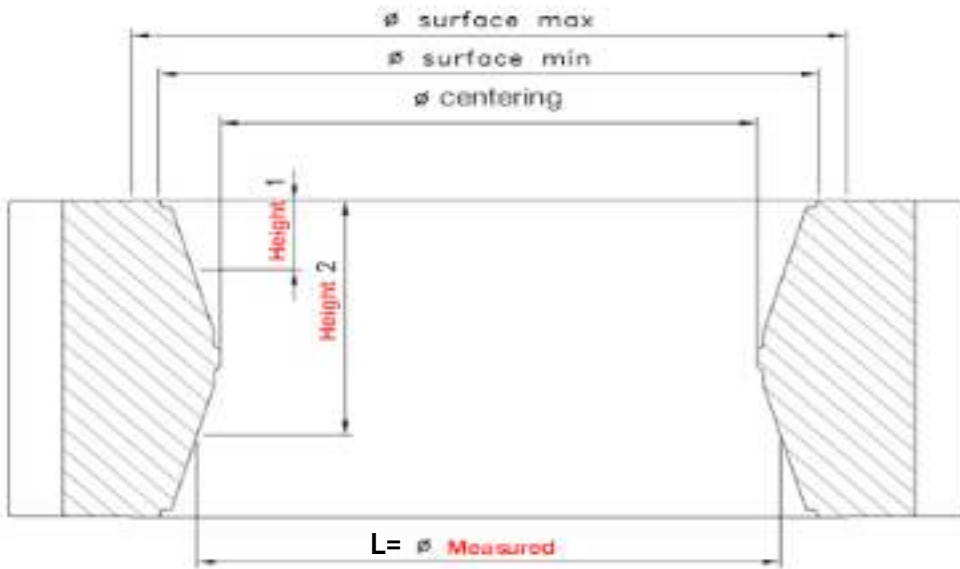
Reference : SP"L"/"Height1"/"Height2"

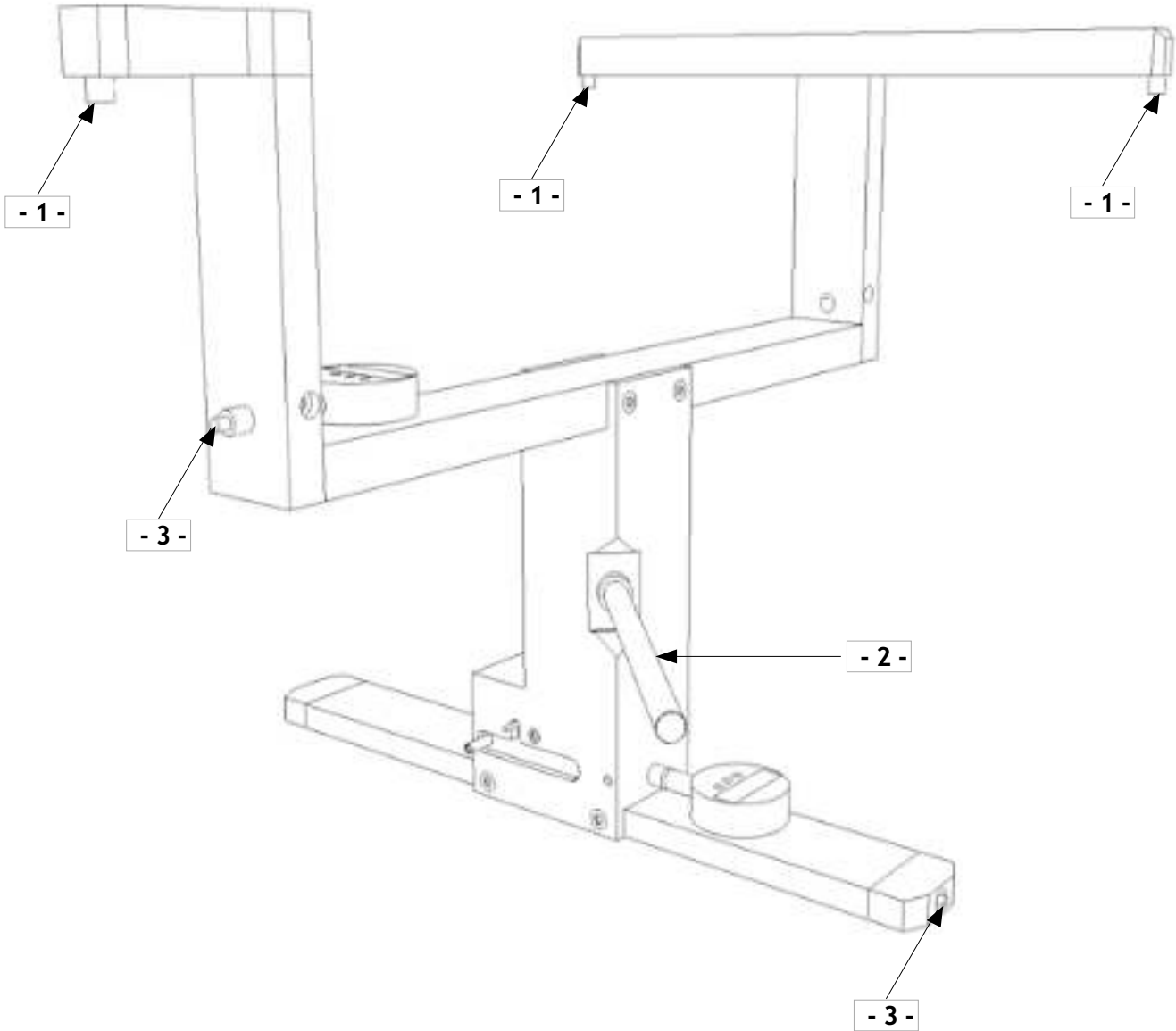
Where :

L : Diameter measured



### Planet Gear Instrument





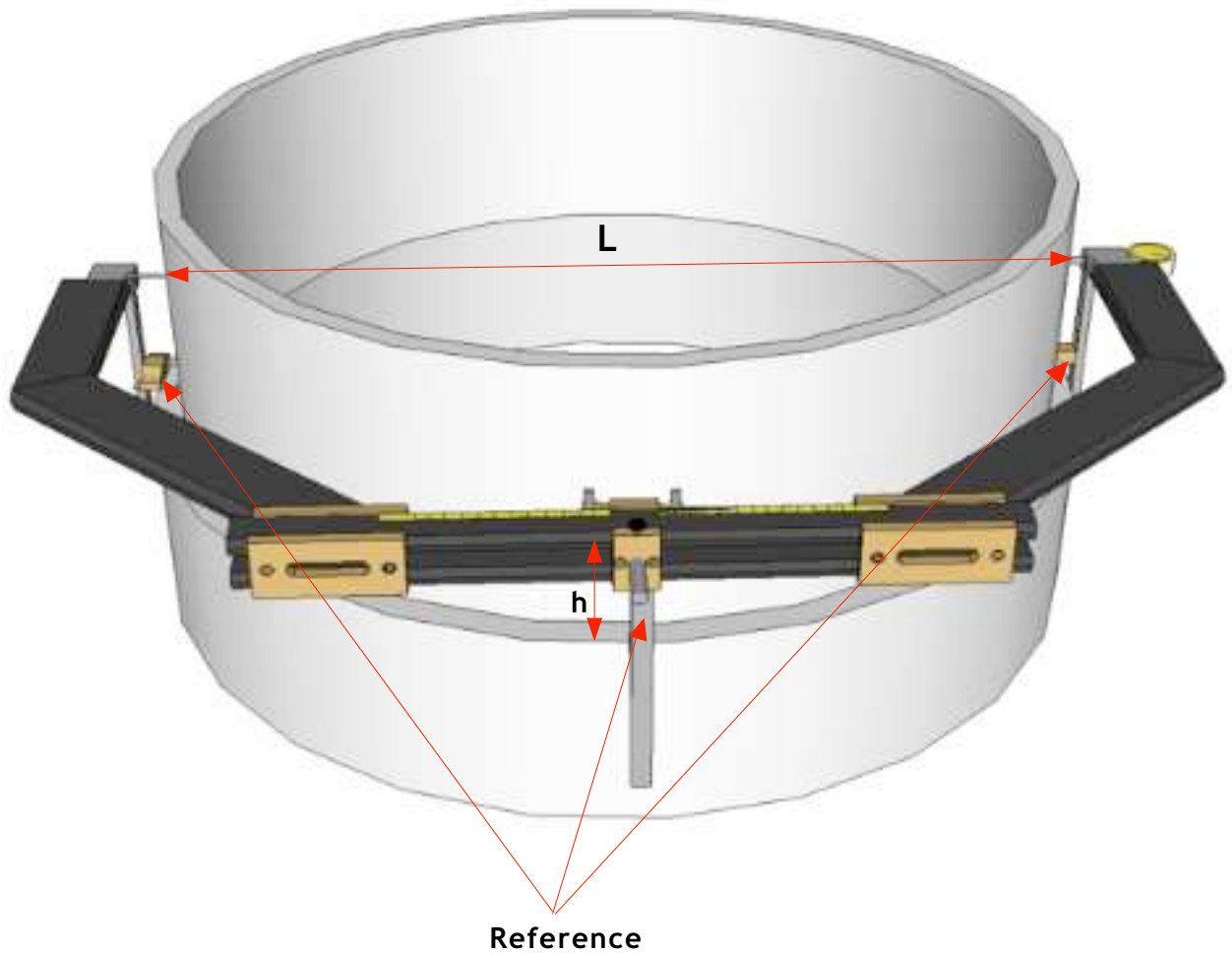
Rep	Description	Reference	Observation
1	Reference datum pin		
2	Spider Pen Ball	SPID-BALL	
3	Ball Ø "xx"	BAL "xx"	

Reference : **CE”L”**

Where :

L : Diameter Measured

h : Height between Reference and Diameter Measured

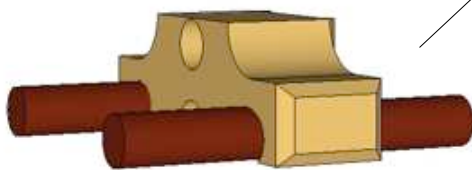




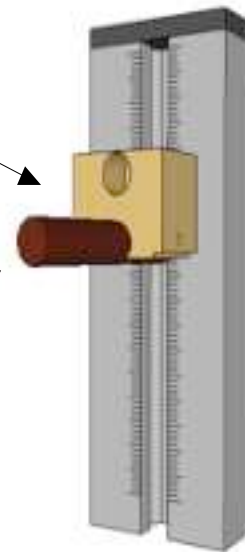
**EXAMPLE OF OPTIONAL EQUIPMENT**



2/3 points Thrust Wide Serie [Ref. B001-W]



2/3 points Thrust Narrow Serie [Ref. B001-N]



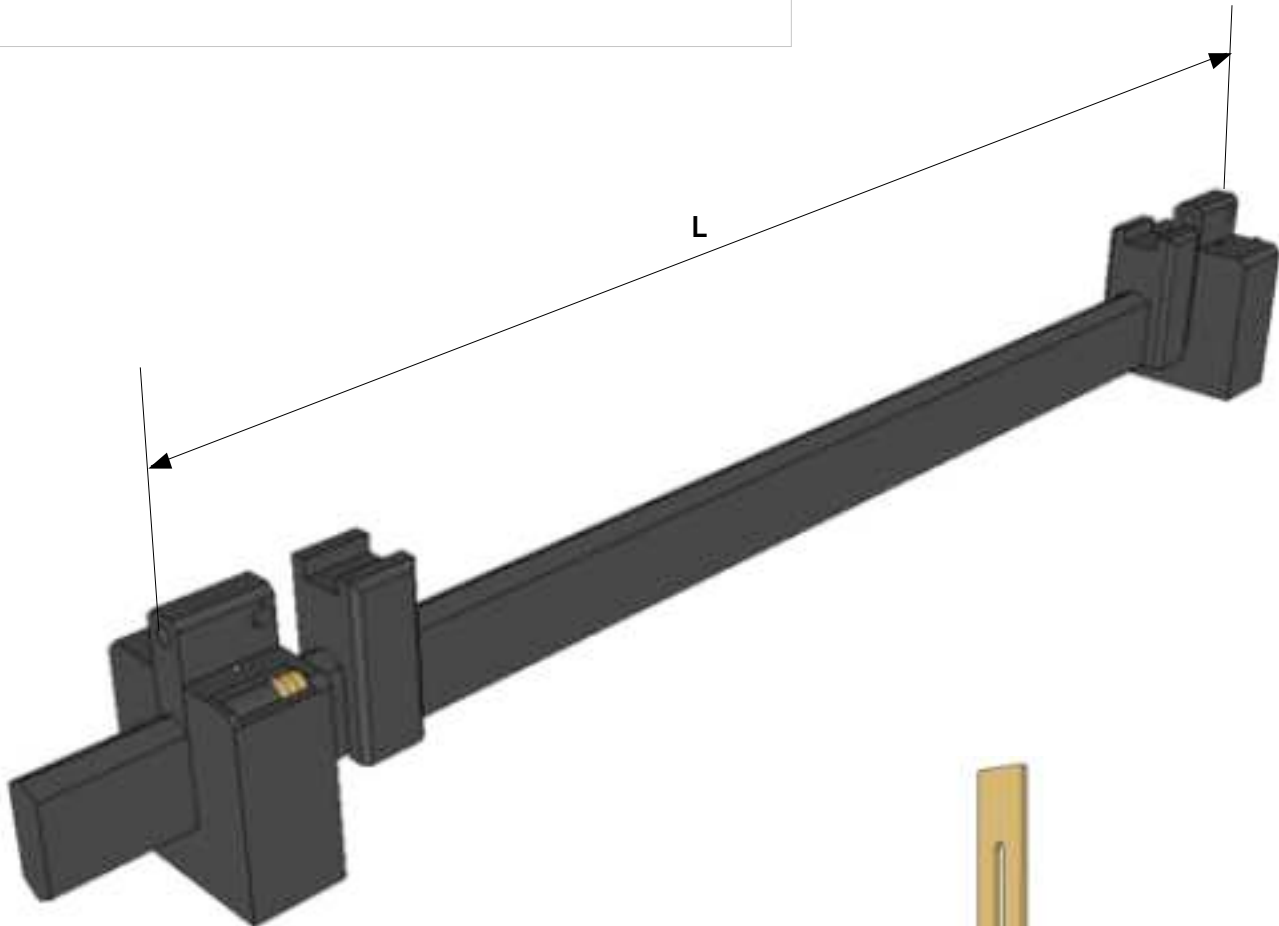
Fixture For Alesometer [Ref. FIX "h"]

Reference : **FM**"L" (Carbon Ruler)

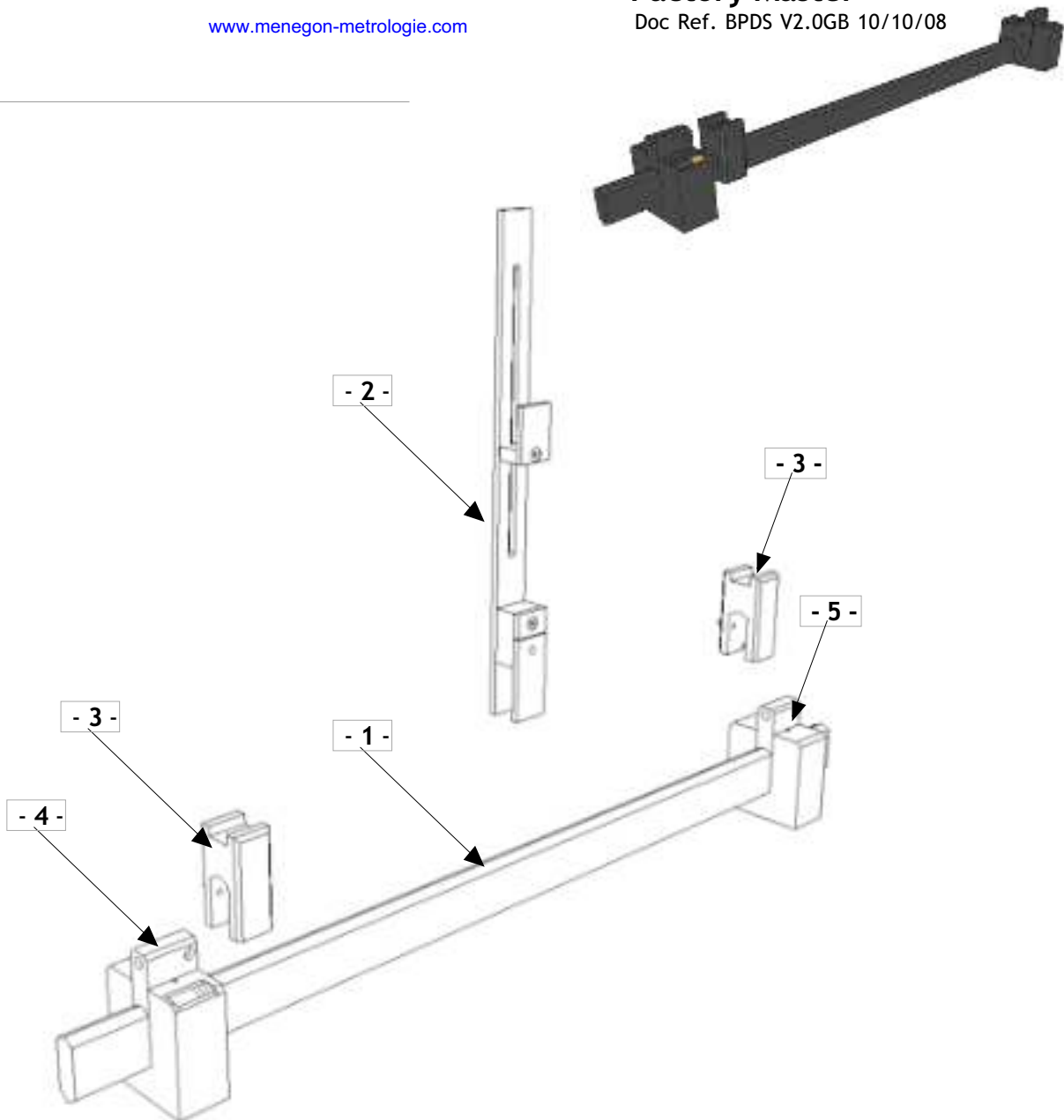
Reference : **FMS**"L" (Steel Ruler)

Where :

L : Diameter Measured (ID and OD)



"H" Support for Factory Master [Ref. FM-HS]



Rep	Description	Reference	Observation
1	Carbon Ruler	CR	Steel Ruler Ref. : SR
2	"H" Support for Factory Master	FM-HS	
3	Support Instrument for Factory Master	FM001	
4	Factory Master Bloc Digit	FMBD-01	
5	Factory Master Bloc	FMB-01	

Spare parts come as follow :

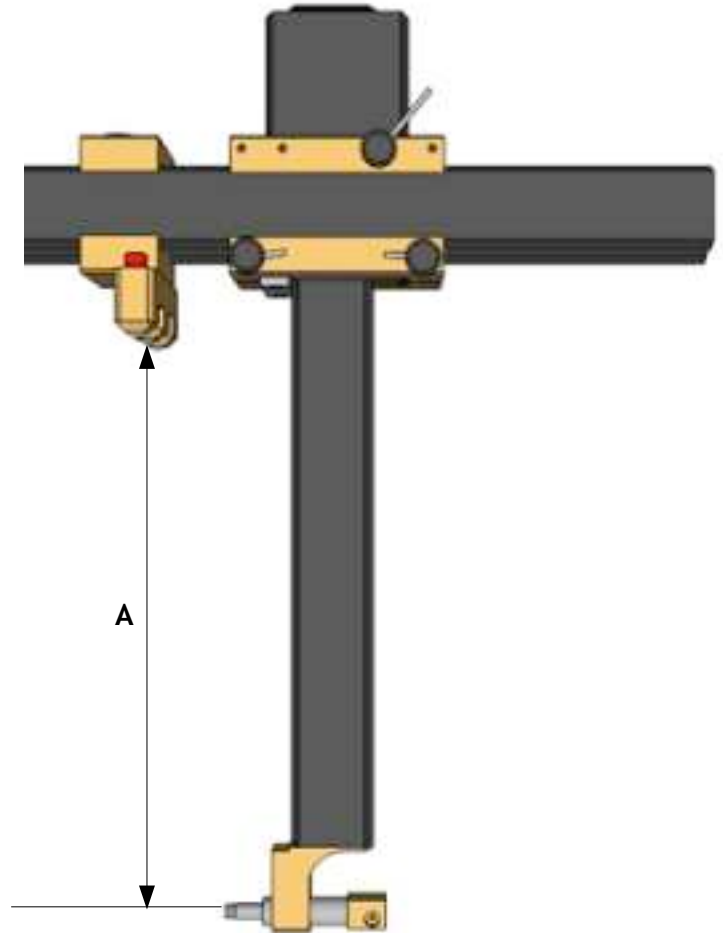
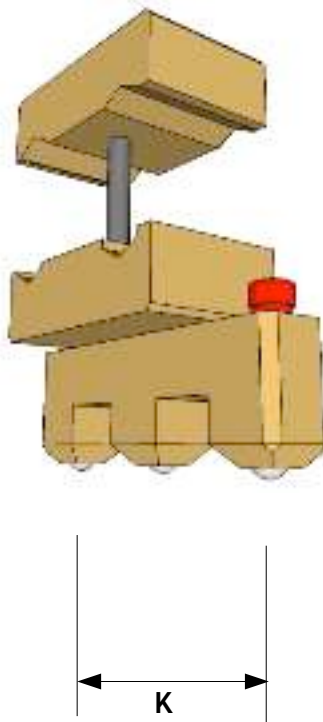
Description	Reference	Rep [qty]
"H" Support for Factory Master	FM-HS	2 (x1)
Support Instrument for Factory Master	FM001	3 (x2) Specific Supports for Pump Instrument Ref. : FM002
Factory Master Bloc Digit	FMBD-01	4 (x1)
Factory Master Bloc	FMB-01	5 (x1)

Reference : **MC**"A"/"L"

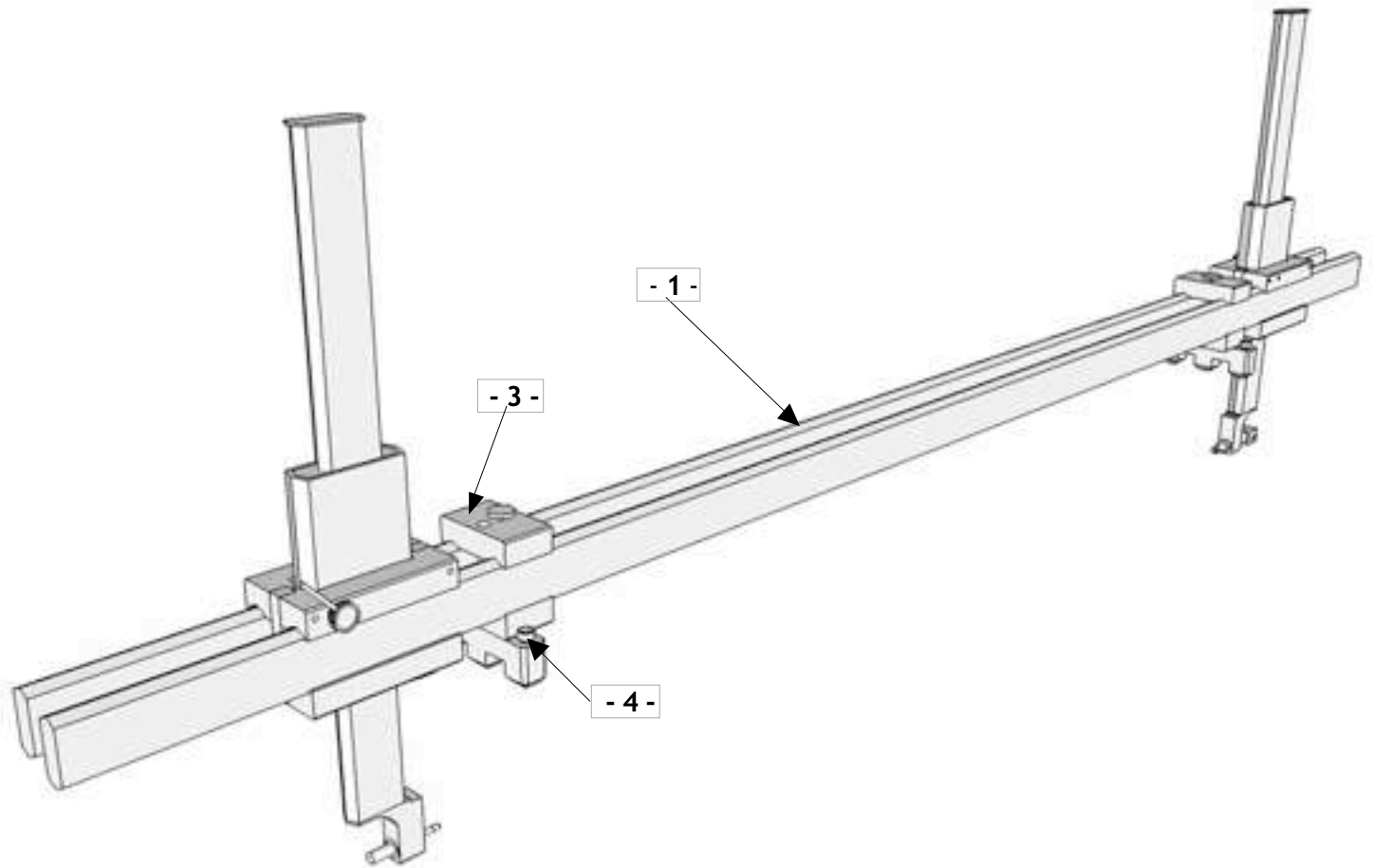
Where :

A : Height under Ball in mm (see table bellow)

L : Max Diameter in mm (



MODEL	A	k
MC65	65	80
MC85	85	80
MC120	120	80
MC150	150	80
MC200	200	80
MC250	250	80
MC300	300	80
MC350	350	80
MC400	400	80



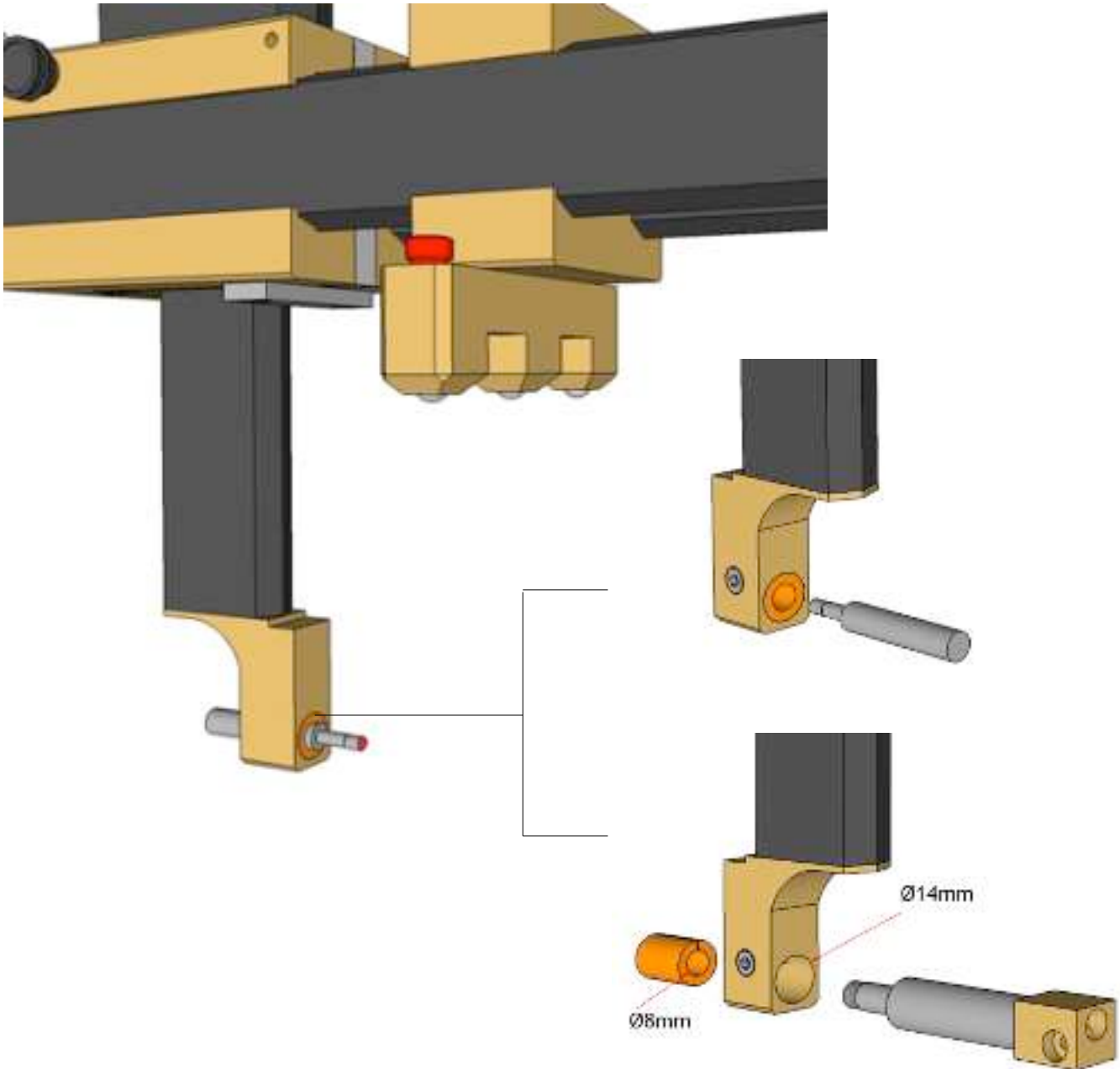
Rep	Description	Reference	Observation
1	Carbon Ruler	CRxxxx	
2	Mobile Fixture	BPR-Cxxx & GMR-Cxxx	
3	Thrust Point (Mobile)		
4	Fix Point Ajstement		

Spare parts come as follow :

Description	Reference	Rep [qty]
Carbon Ruler	CR	1-(x2)
Mobile Fixture	BPR-Cxxx & GMR-Cxxx	2-(x2)
Thrust Point (Mobile)		3-(x2)
Fix Point Ajstement		4-(x4)

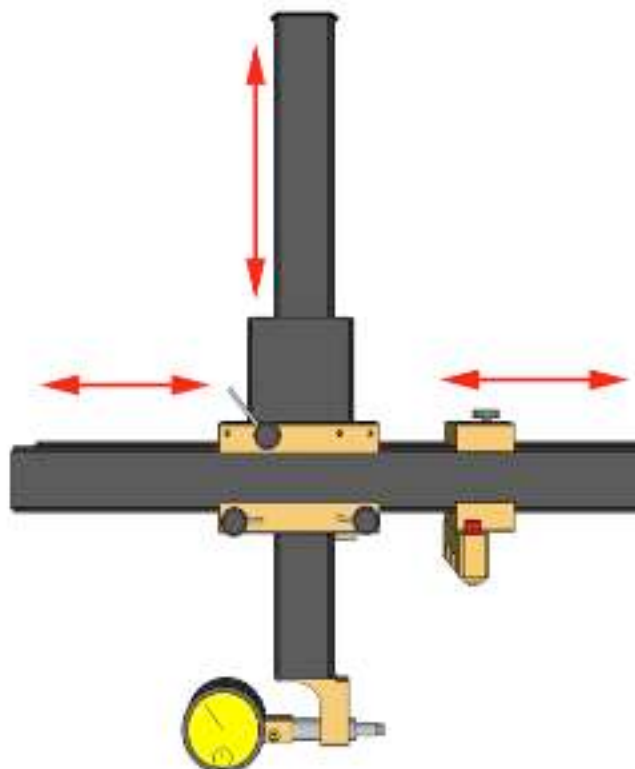
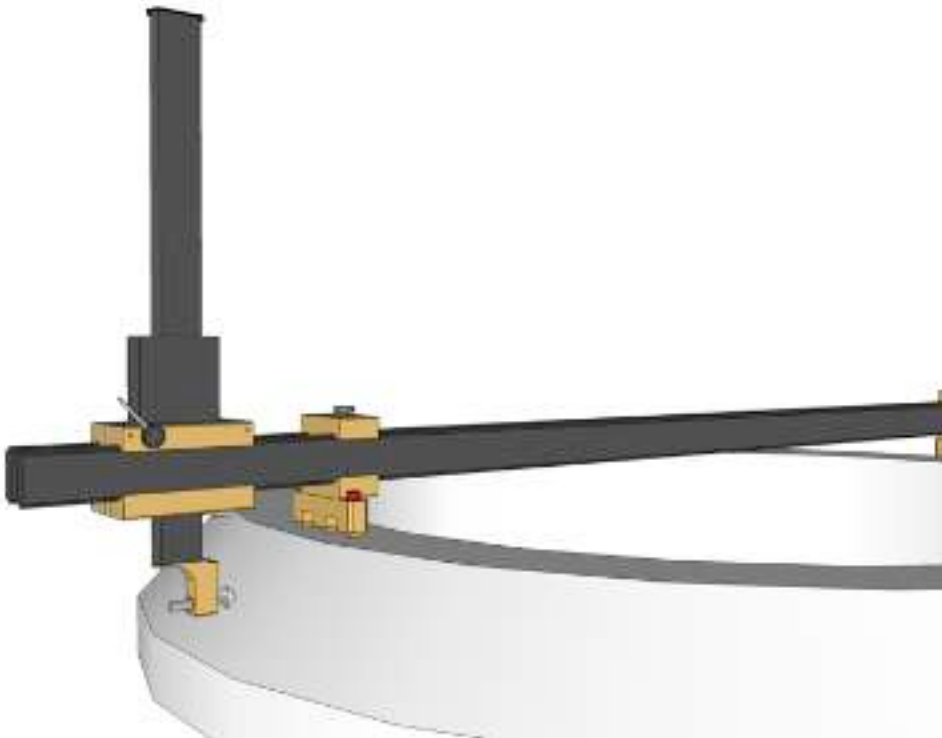


Standard Equipments

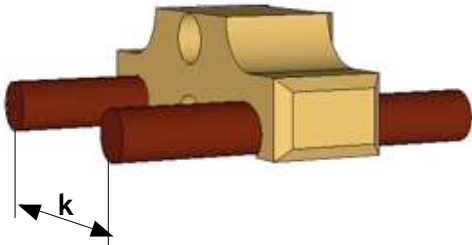
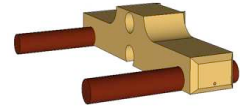


Adaptators for Indicators and Piston Kit (PK001)

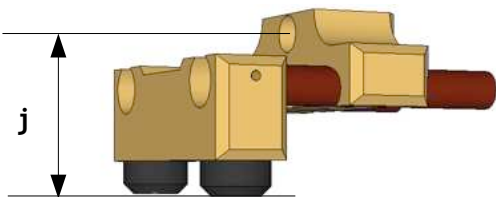
MODEL	Ref	Standard
Adaptator Ø 14mm to Ø 8mm	ADP-001	Europe-Asia
Adaptator Ø 14mm to Ø 9.525mm	ADP-002	USA



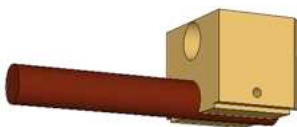
All these Accessories are compatible with :  
**BasicPro®, BasicPro® “R”, GM, GMR, Alesometer**  
 Reference : See Bellow  
 Description : See Bellow



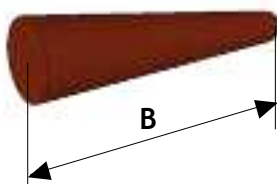
**2/3 points Thrust [Ref. B001-N/W]**  
 Narrow Serie (N)      k = 40mm  
 Wide Serie (W)        k = 80mm



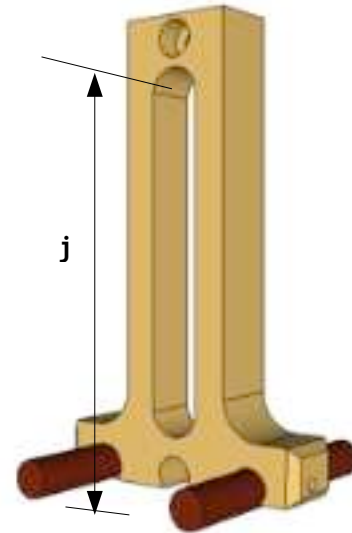
**2/3 points Negative Adapter [Ref. BA002-N/W]**  
 Narrow Serie (N)      j = -20mm  
 Wide Serie (W)        j = -20mm



**1 point Thrust [Ref. B003]**

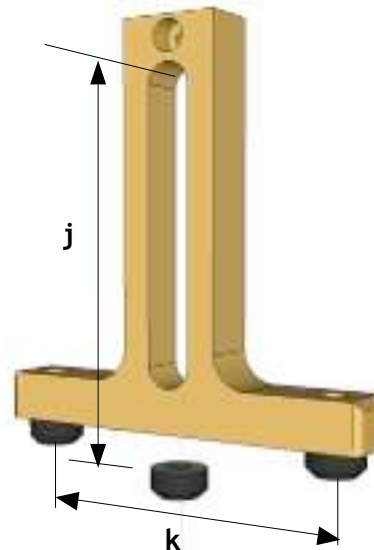


**Cylindrical Pin [Ref. B006]**  
 B006-60    B = 60mm  
 B006-80    B = 80mm  
 B006-100   B = 100mm  
 Compatible with all Thrusts.



**2/3 points Negative Cylindrical Thrust [Ref. B004-N/W]**  
 Shift mini            j = (130mm - h(max))  
 Shift Max             j = -110mm

ie. BP85 => -50mm to -110mm



**2/3 points Negative Column Thrust [Ref. B005]**  
 Available only on “W”      k = 80mm  
 Shift mini                    j = (110mm - h(max))  
 Shift Max                    j = -100mm

ie. BP85 => -50mm to -110mm

**Jean Louis MENEGON**

Représentant et Conseiller  
Région Sud Ouest

**Tel : 06 76 08 96 83**

Email: [jlouismenegon@aol.com](mailto:jlouismenegon@aol.com)  
[www.menegon-metrologie.com](http://www.menegon-metrologie.com)

Visiter le site web :

**[www.menegon-metrologie.com](http://www.menegon-metrologie.com)**